

## Product datasheet for **TA332457**

### RUVBL2 Rabbit Polyclonal Antibody

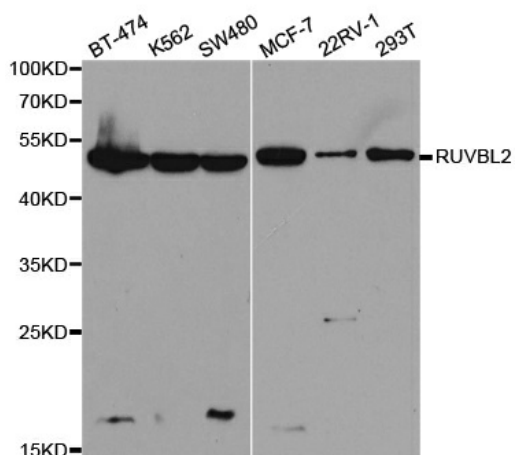
#### Product data:

Product Type:	Primary Antibodies
Applications:	ICC/IF, IP, WB
Recommended Dilution:	WB 1:500 - 1:2000;IF 1:50- 1:200
Reactivity:	Human, Mouse, Rat
Host:	Rabbit
Isotype:	IgG
Clonality:	Polyclonal
Immunogen:	Recombinant protein of human RUVBL2
Formulation:	Store at -20°C (regular) and -80°C (long term). Avoid freeze / thaw cycles. Buffer: PBS with 0.02% sodium azide, 50% glycerol, pH7.3.
Concentration:	lot specific
Purification:	Affinity purification
Conjugation:	Unconjugated
Storage:	Store at -20°C as received.
Stability:	Stable for 12 months from date of receipt.
Predicted Protein Size:	463
Gene Name:	RuvB like AAA ATPase 2
Database Link:	<a href="#">NP_006657</a> <a href="#">Entrez Gene 20174 MouseEntrez Gene 292907 RatEntrez Gene 10856 Human Q9Y230</a>
Background:	This gene encodes the second human homologue of the bacterial RuvB gene. Bacterial RuvB protein is a DNA helicase essential for homologous recombination and DNA double-strand break repair. Functional analysis showed that this gene product has both ATPase and DNA helicase activities. This gene is physically linked to the CGB/LHB gene cluster on chromosome 19q13.3, and is very close (55 nt) to the LHB gene, in the opposite orientation.
Synonyms:	CGI-46; ECP51; INO80J; REPTIN; RVB2; TIH2; TIP48; TIP49B
Protein Families:	Transcription Factors

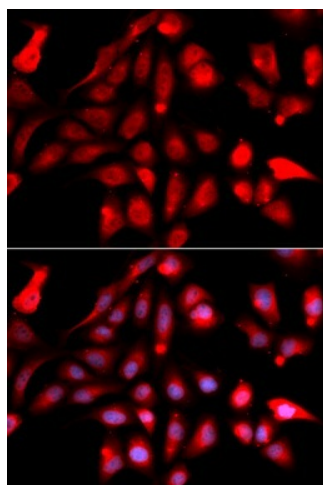


[View online »](#)

## Product images:



Western blot analysis of extracts of various cell lines, using RUVBL2 antibody.



Immunofluorescence analysis of U2OS cell using RUVBL2 antibody. Blue: DAPI for nuclear staining.