

## Product datasheet for **TA332454S**

### SLC25A4 Rabbit Polyclonal Antibody

#### Product data:

Product Type:	Primary Antibodies
Applications:	ICC/IF, WB
Recommended Dilution:	WB 1:500 - 1:2000
Reactivity:	Human, Mouse, Rat
Host:	Rabbit
Isotype:	IgG
Clonality:	Polyclonal
Immunogen:	Recombinant protein of human SLC25A4
Formulation:	Store at -20°C (regular) and -80°C (long term). Avoid freeze / thaw cycles. Buffer: PBS with 0.02% sodium azide, 50% glycerol, pH7.3.
Concentration:	lot specific
Purification:	Affinity purification
Conjugation:	Unconjugated
Storage:	Store at -20°C as received.
Stability:	Stable for 12 months from date of receipt.
Predicted Protein Size:	298
Gene Name:	solute carrier family 25 member 4
Database Link:	<a href="#">NP_001142</a> <a href="#">Entrez Gene 11739 MouseEntrez Gene 85333 RatEntrez Gene 291 Human P12235</a>
Background:	This gene is a member of the mitochondrial carrier subfamily of solute carrier protein genes. The product of this gene functions as a gated pore that translocates ADP from the cytoplasm into the mitochondrial matrix and ATP from the mitochondrial matrix into the cytoplasm. The protein forms a homodimer embedded in the inner mitochondria membrane. Mutations in this gene have been shown to result in autosomal dominant progressive external ophthalmoplegia and familial hypertrophic cardiomyopathy.
Synonyms:	1; AAC1; ANT; ANT 1; ANT1; MTDPS12; PEO2; PEO3; T1

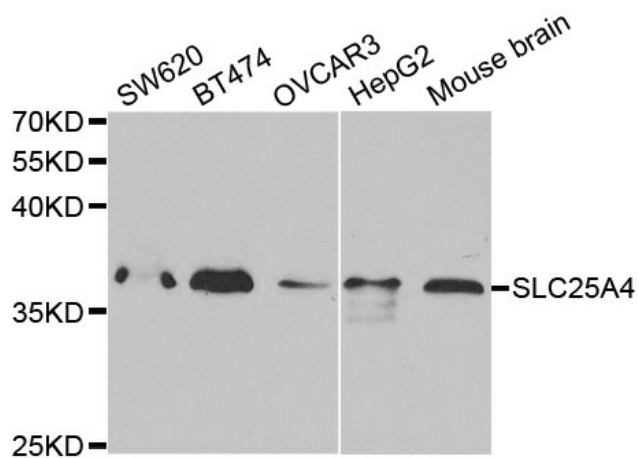


[View online »](#)

Protein Families: Druggable Genome, Transmembrane

Protein Pathways: Calcium signaling pathway, Huntington's disease, Parkinson's disease

### Product images:



Western blot analysis of extracts of various cell lines, using SLC25A4 antibody.