

Product datasheet for **TA332453S**

GABA A Receptor beta 2 (GABRB2) Rabbit Polyclonal Antibody

Product data:

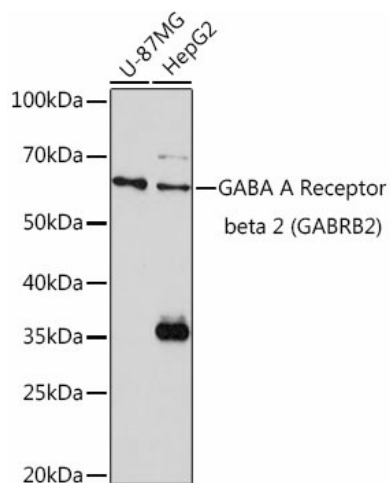
Product Type:	Primary Antibodies
Applications:	ELISA, WB
Recommended Dilution:	WB, 1:500 - 1:2000 ELISA, Recommended starting concentration is 1 µg/mL. Please optimize the concentration based on your specific assay requirements.
Reactivity:	Human, Mouse
Host:	Rabbit
Isotype:	IgG
Clonality:	Polyclonal
Formulation:	Store at -20°C (regular) and -80°C (long term). Avoid freeze / thaw cycles. Buffer: PBS with 0.02% sodium azide, 50% glycerol, pH7.3.
Concentration:	lot specific
Purification:	Affinity purification
Conjugation:	Unconjugated
Storage:	Store at -20°C. Avoid freeze / thaw cycles.
Stability:	Stable for 12 months from date of receipt.
Predicted Protein Size:	59kDa
Gene Name:	gamma-aminobutyric acid type A receptor beta2 subunit
Database Link:	NP_000804 Entrez Gene 14401 Mouse Entrez Gene 2561 Human P47870
Background:	The gamma-aminobutyric acid (GABA) A receptor is a multisubunit chloride channel that mediates the fastest inhibitory synaptic transmission in the central nervous system. This gene encodes GABA A receptor, beta 2 subunit. It is mapped to chromosome 5q34 in a cluster comprised of genes encoding alpha 1 and gamma 2 subunits of the GABA A receptor. Alternative splicing of this gene generates 2 transcript variants, differing by a 114 bp insertion.
Synonyms:	MGC119386; MGC119388; MGC119389


[View online »](#)

Protein Families: Druggable Genome, Ion Channels: Cys-loop Receptors, Transmembrane

Protein Pathways: Neuroactive ligand-receptor interaction

Product images:



Western blot analysis of various lysates using GABA A Receptor beta 2 (GABA A Receptor beta 2 (GABRB2)) Rabbit pAb (TA332453) at 1:1000 dilution.

Secondary antibody: HRP-conjugated Goat anti-Rabbit IgG (H+L) (AS014) at 1:10000 dilution.

Lysates/proteins: 25µg per lane.

Blocking buffer: 3% nonfat dry milk in TBST.

Detection: ECL Basic Kit (RM00020).

Exposure time: 180s.