

Product datasheet for **TA332451S**

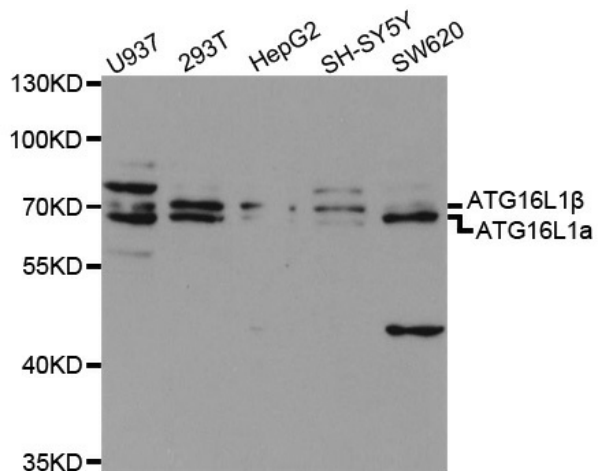
ATG16L1 Rabbit Polyclonal Antibody

Product data:

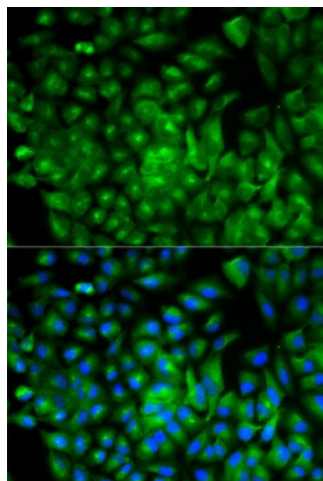
Product Type:	Primary Antibodies
Applications:	ICC/IF, IHC, WB
Recommended Dilution:	WB 1:500 - 1:2000;IF 1:50- 1:200
Reactivity:	Human, Mouse, Rat
Host:	Rabbit
Isotype:	IgG
Clonality:	Polyclonal
Immunogen:	Recombinant protein of human ATG16L1
Formulation:	Store at -20°C (regular) and -80°C (long term). Avoid freeze / thaw cycles. Buffer: PBS with 0.02% sodium azide, 50% glycerol, pH7.3.
Concentration:	lot specific
Purification:	Affinity purification
Conjugation:	Unconjugated
Storage:	Store at -20°C as received.
Stability:	Stable for 12 months from date of receipt.
Predicted Protein Size:	607
Gene Name:	autophagy related 16 like 1
Database Link:	NP_110430 Entrez Gene 77040 MouseEntrez Gene 363278 RatEntrez Gene 55054 Human Q676U5
Background:	The protein encoded by this gene is part of a large protein complex that is necessary for autophagy, the major process by which intracellular components are targeted to lysosomes for degradation. Defects in this gene are a cause of susceptibility to inflammatory bowel disease type 10 (IBD10). Several transcript variants encoding different isoforms have been found for this gene.
Synonyms:	APG16L; ATG16A; ATG16L; IBD10; WDR30



[View online »](#)

Product images:


Western blot analysis of extracts of various cell lines, using ATG16L1 antibody.



Immunofluorescence analysis of A549 cell using ATG16L1 antibody. Blue: DAPI for nuclear staining.