

## Product datasheet for TA332450S

### MD2 (LY96) Rabbit Polyclonal Antibody

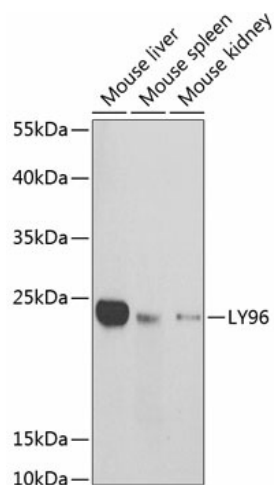
#### Product data:

Product Type:	Primary Antibodies
Applications:	ELISA, WB
Recommended Dilution:	WB, 1:500 - 1:2000 ELISA, Recommended starting concentration is 1 µg/mL. Please optimize the concentration based on your specific assay requirements.
Reactivity:	Mouse
Host:	Rabbit
Isotype:	IgG
Clonality:	Polyclonal
Formulation:	Store at -20°C (regular) and -80°C (long term). Avoid freeze / thaw cycles. Buffer: PBS with 0.02% sodium azide, 50% glycerol, pH7.3.
Concentration:	lot specific
Purification:	Affinity purification
Conjugation:	Unconjugated
Storage:	Store at -20°C. Avoid freeze / thaw cycles.
Stability:	Stable for 12 months from date of receipt.
Predicted Protein Size:	19kDa
Gene Name:	lymphocyte antigen 96
Database Link:	<a href="#">NP_056179</a> <a href="#">Entrez Gene 17087 Mouse</a> <a href="#">Q9Y6Y9</a>
Background:	This gene encodes a protein which associates with toll-like receptor 4 on the cell surface and confers responsiveness to lipopolysaccharide (LPS), thus providing a link between the receptor and LPS signaling. Studies of the mouse ortholog suggest that this gene may be involved in endotoxin neutralization. Alternative splicing results in multiple transcript variants encoding different isoforms.
Synonyms:	ESOP-1; ly-96; MD-2; MD2
Protein Families:	Secreted Protein


[View online »](#)

**Protein Pathways:** Pathogenic Escherichia coli infection, Toll-like receptor signaling pathway

**Product images:**



Western blot analysis of various lysates using LY96 Rabbit pAb (TA332450) at 1:1000 dilution. Secondary antibody: HRP-conjugated Goat anti-Rabbit IgG (H+L) (AS014) at 1:10000 dilution. Lysates/proteins: 25µg per lane. Blocking buffer: 3% nonfat dry milk in TBST.