

Product datasheet for **TA332449S**

GLB1 Rabbit Polyclonal Antibody

Product data:

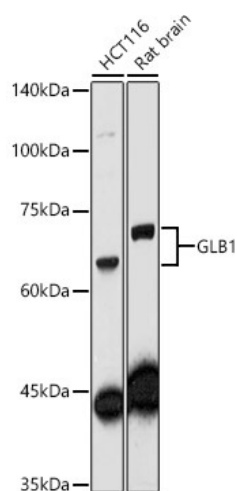
Product Type:	Primary Antibodies
Applications:	ELISA, ICC/IF, IHC, WB
Recommended Dilution:	WB, 1:500 - 1:1000 IHC-P, 1:50 - 1:200 IF/ICC, 1:50 - 1:200 ELISA, Recommended starting concentration is 1 µg/mL. Please optimize the concentration based on your specific assay requirements.
Reactivity:	Human, Mouse, Rat
Host:	Rabbit
Isotype:	IgG
Clonality:	Polyclonal
Formulation:	Store at -20°C (regular) and -80°C (long term). Avoid freeze / thaw cycles. Buffer: PBS with 0.02% sodium azide, 50% glycerol, pH7.3.
Concentration:	lot specific
Purification:	Affinity purification
Conjugation:	Unconjugated
Storage:	Store at -20°C. Avoid freeze / thaw cycles.
Stability:	Stable for 12 months from date of receipt.
Predicted Protein Size:	76kDa
Gene Name:	galactosidase beta 1
Database Link:	NP_001073279 Entrez Gene 12091 Mouse Entrez Gene 316033 Rat Entrez Gene 2720 Human P16278



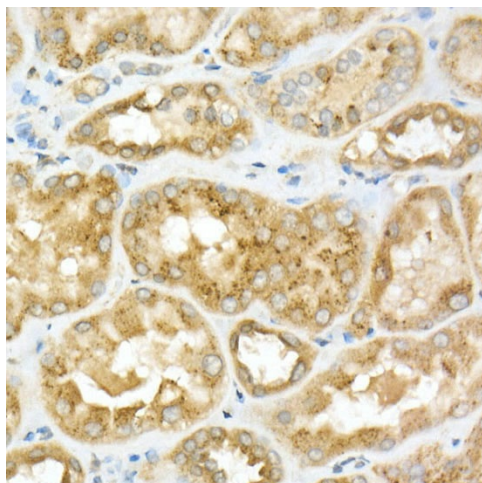
[View online »](#)

Background:	This gene encodes a member of the glycosyl hydrolase 35 family of proteins. Alternative splicing results in multiple transcript variants, at least one of which encodes a preproprotein that is proteolytically processed to generate the mature lysosomal enzyme. This enzyme catalyzes the hydrolysis of a terminal beta-linked galactose residue from ganglioside substrates and other glycoconjugates. Mutations in this gene may result in GM1-gangliosidosis and Morquio B syndrome.
Synonyms:	EBP; ELNR1; MPS4B
Protein Families:	Druggable Genome
Protein Pathways:	Galactose metabolism, Glycosaminoglycan degradation, Glycosphingolipid biosynthesis - ganglio series, Lysosome, Metabolic pathways, Other glycan degradation, Sphingolipid metabolism

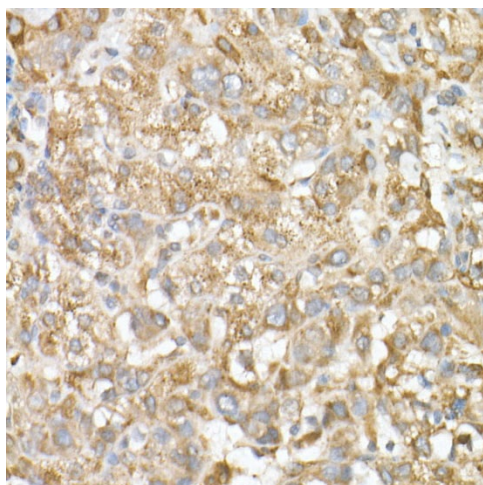
Product images:



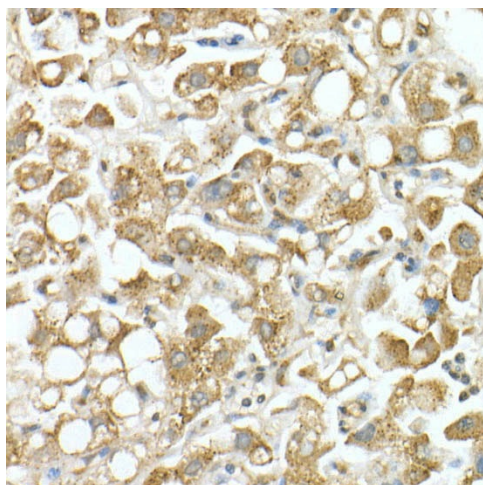
Western blot analysis of various lysates using GLB1 Rabbit pAb ([TA332449]) at 1:1000 dilution incubated overnight at 4°C. Secondary antibody: HRP-conjugated Goat anti-Rabbit IgG (H+L) (AS014) at 1:10000 dilution. Lysates/proteins: 25 µg per lane. Blocking buffer: 3% nonfat dry milk in TBST. Detection: ECL Basic Kit (RM00020). Exposure time: 90s.



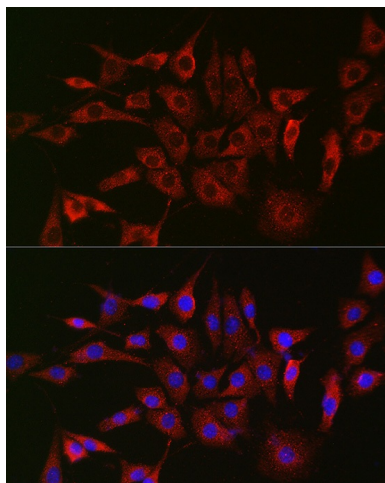
Immunohistochemistry analysis of paraffin-embedded Human kidney using GLB1 Rabbit pAb ([TA332449]) at dilution of 1:20 (40x lens). High pressure antigen retrieval performed with 0.01M Citrate Bufferr (pH 6.0) prior to IHC staining.



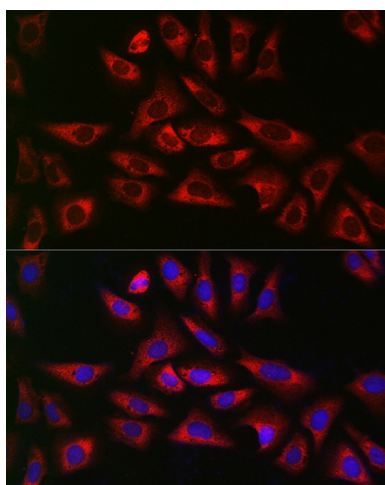
Immunohistochemistry analysis of paraffin-embedded Human liver cancer using GLB1 Rabbit pAb ([TA332449]) at dilution of 1:20 (40x lens). High pressure antigen retrieval performed with 0.01M Citrate Bufferr (pH 6.0) prior to IHC staining.



Immunohistochemistry analysis of paraffin-embedded Human liver using GLB1 Rabbit pAb ([TA332449]) at dilution of 1:20 (40x lens). High pressure antigen retrieval performed with 0.01M Citrate Bufferr (pH 6.0) prior to IHC staining.



Immunofluorescence analysis of NIH/3T3 cells using GLB1 Rabbit pAb ([TA332449]) at dilution of 1:100 (40x lens). Secondary antibody: Cy3-conjugated Goat anti-Rabbit IgG (H+L) (AS007) at 1:500 dilution. Blue: DAPI for nuclear staining.



Immunofluorescence analysis of U2OS cells using GLB1 Rabbit pAb ([TA332449]) at dilution of 1:100 (40x lens). Secondary antibody: Cy3-conjugated Goat anti-Rabbit IgG (H+L) (AS007) at 1:500 dilution. Blue: DAPI for nuclear staining.