

## Product datasheet for **TA332449**

### GLB1 Rabbit Polyclonal Antibody

#### Product data:

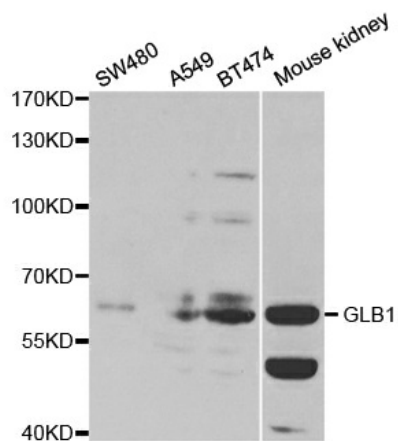
Product Type:	Primary Antibodies
Applications:	ICC/IF, IHC, WB
Recommended Dilution:	WB 1:500 - 1:2000
Reactivity:	Human, Mouse, Rat
Host:	Rabbit
Isotype:	IgG
Clonality:	Polyclonal
Immunogen:	Recombinant protein of human GLB1
Formulation:	Store at -20°C (regular) and -80°C (long term). Avoid freeze / thaw cycles. Buffer: PBS with 0.02% sodium azide, 50% glycerol, pH7.3.
Concentration:	lot specific
Purification:	Affinity purification
Conjugation:	Unconjugated
Storage:	Store at -20°C as received.
Stability:	Stable for 12 months from date of receipt.
Gene Name:	galactosidase beta 1
Database Link:	<a href="#">NP_001073279</a> <a href="#">Entrez Gene 12091 Mouse</a> <a href="#">Entrez Gene 316033 Rat</a> <a href="#">Entrez Gene 2720 Human</a> <a href="#">P16278</a>
Background:	This gene encodes beta-galactosidase-1, a lysosomal enzyme that hydrolyzes the terminal beta-galactose from ganglioside substrates and other glycoconjugates. Defects in this gene are the cause of GM1-gangliosidosis and Morquio B syndrome. Multiple transcript variants encoding different isoforms have been found for this gene.
Synonyms:	EBP; ELNR1; MPS4B
Protein Families:	Druggable Genome



[View online »](#)

**Protein Pathways:** Galactose metabolism, Glycosaminoglycan degradation, Glycosphingolipid biosynthesis - ganglio series, Lysosome, Metabolic pathways, Other glycan degradation, Sphingolipid metabolism

**Product images:**



Western blot analysis of extracts of various cell lines, using GLB1 antibody.