

Product datasheet for **TA332447S**

ATF3 Rabbit Polyclonal Antibody

Product data:

Product Type:	Primary Antibodies
Applications:	ELISA, WB
Recommended Dilution:	WB, 1:500 - 1:2000 ELISA, Recommended starting concentration is 1 µg/mL. Please optimize the concentration based on your specific assay requirements.
Reactivity:	Mouse, Rat, Human
Host:	Rabbit
Isotype:	IgG
Clonality:	Polyclonal
Formulation:	Store at -20°C (regular) and -80°C (long term). Avoid freeze / thaw cycles. Buffer: PBS with 0.02% sodium azide, 50% glycerol, pH7.3.
Concentration:	lot specific
Purification:	Affinity purification
Conjugation:	Unconjugated
Storage:	Store at -20°C. Avoid freeze / thaw cycles.
Stability:	Stable for 12 months from date of receipt.
Predicted Protein Size:	21kDa
Gene Name:	activating transcription factor 3
Database Link:	NP_004015 Entrez Gene 11910 Mouse Entrez Gene 25389 Rat Entrez Gene 467 Human P18847
Background:	This gene encodes a member of the mammalian activation transcription factor/cAMP responsive element-binding (CREB) protein family of transcription factors. This gene is induced by a variety of signals, including many of those encountered by cancer cells, and is involved in the complex process of cellular stress response. Multiple transcript variants encoding different isoforms have been found for this gene. It is possible that alternative splicing of this gene may be physiologically important in the regulation of target genes.

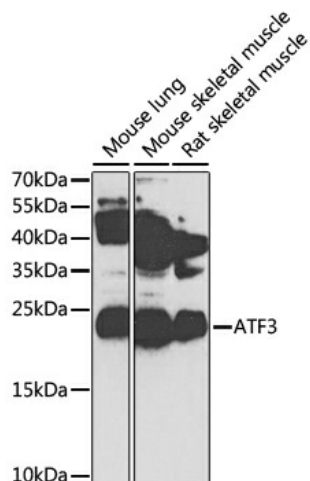


[View online »](#)

Synonyms: activating transcription factor 3; ATF3deltaZip2; ATF3deltaZip2c; ATF3deltaZip3; OTTHUMP00000034887; OTTHUMP00000034890

Protein Families: Transcription Factors

Product images:



Western blot analysis of lysates from RAW 264.7 cells using ATF3 Rabbit pAb (TA332447S) at 1:1000 dilution incubated overnight at 4°C. Raw264.7 cells were treated by LPS (1 µg/ml) at 37°C for 8 hours.

Secondary antibody: HRP-conjugated Goat anti-Rabbit IgG (H+L) (AS014) at 1:10000 dilution.

Lysates/proteins: 30 µg per lane.

Blocking buffer: 3 % nonfat dry milk in TBST.

Detection: ECL Basic Kit (RM00020)

Exposure time: 180 s.