

Product datasheet for **TA332447**

ATF3 Rabbit Polyclonal Antibody

Product data:

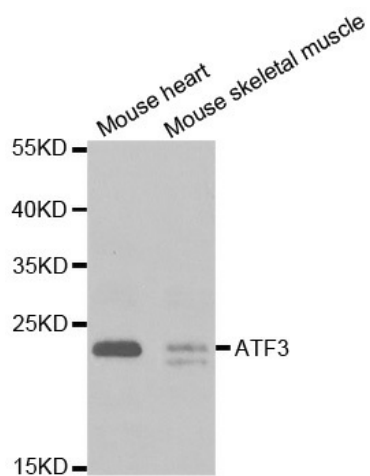
Product Type:	Primary Antibodies
Applications:	WB
Recommended Dilution:	WB 1:500 - 1:2000
Reactivity:	Mouse, Rat, Human
Host:	Rabbit
Isotype:	IgG
Clonality:	Polyclonal
Immunogen:	Recombinant protein of human ATF3
Formulation:	Store at -20°C (regular) and -80°C (long term). Avoid freeze / thaw cycles. Buffer: PBS with 0.02% sodium azide, 50% glycerol, pH7.3.
Concentration:	lot specific
Purification:	Affinity purification
Conjugation:	Unconjugated
Storage:	Store at -20°C as received.
Stability:	Stable for 12 months from date of receipt.
Predicted Protein Size:	20 kDa
Gene Name:	activating transcription factor 3
Database Link:	NP_004015 Entrez Gene 11910 MouseEntrez Gene 25389 RatEntrez Gene 467 Human P18847
Background:	This gene encodes a member of the mammalian activation transcription factor/cAMP responsive element-binding (CREB) protein family of transcription factors. This gene is induced by a variety of signals, including many of those encountered by cancer cells, and is involved in the complex process of cellular stress response. Multiple transcript variants encoding different isoforms have been found for this gene. It is possible that alternative splicing of this gene may be physiologically important in the regulation of target genes.
Synonyms:	activating transcription factor 3; ATF3deltaZip2; ATF3deltaZip2c; ATF3deltaZip3; OTTHUMP00000034887; OTTHUMP00000034890



[View online »](#)

Protein Families: Transcription Factors

Product images:



Western blot analysis of extracts of various cell lines, using ATF3 antibody.