

## Product datasheet for **TA332445S**

### Alpha 1 microglobulin (AMBP) Rabbit Polyclonal Antibody

#### Product data:

Product Type:	Primary Antibodies
Applications:	ELISA, WB
Recommended Dilution:	WB, 1:500 - 1:1000 ELISA, Recommended starting concentration is 1 µg/mL. Please optimize the concentration based on your specific assay requirements.
Reactivity:	Human, Mouse
Host:	Rabbit
Isotype:	IgG
Clonality:	Polyclonal
Formulation:	Store at -20°C (regular) and -80°C (long term). Avoid freeze / thaw cycles. Buffer: PBS with 0.02% sodium azide, 50% glycerol, pH7.3.
Concentration:	lot specific
Purification:	Affinity purification
Conjugation:	Unconjugated
Storage:	Store at -20°C. Avoid freeze / thaw cycles.
Stability:	Stable for 12 months from date of receipt.
Predicted Protein Size:	39kDa
Gene Name:	alpha-1-microglobulin/bikunin precursor
Database Link:	<a href="#">NP_001624</a> <a href="#">Entrez Gene 11699 Mouse</a> <a href="#">Entrez Gene 259 Human</a> <a href="#">P02760</a>
Background:	This gene encodes a complex glycoprotein secreted in plasma. The precursor is proteolytically processed into distinct functioning proteins: alpha-1-microglobulin, which belongs to the superfamily of lipocalin transport proteins and may play a role in the regulation of inflammatory processes, and bikunin, which is a urinary trypsin inhibitor belonging to the superfamily of Kunitz-type protease inhibitors and plays an important role in many physiological and pathological processes. This gene is located on chromosome 9 in a cluster of lipocalin genes.

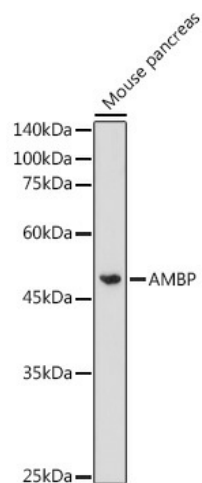


[View online »](#)

**Synonyms:** A1M; EDC1; HCP; HI30; IATIL; ITI; ITIL; ITILC; UTI

**Protein Families:** Secreted Protein

**Product images:**



Western blot analysis of lysates from Mouse pancreas