

Product datasheet for **TA332445**

Alpha 1 microglobulin (AMBP) Rabbit Polyclonal Antibody

Product data:

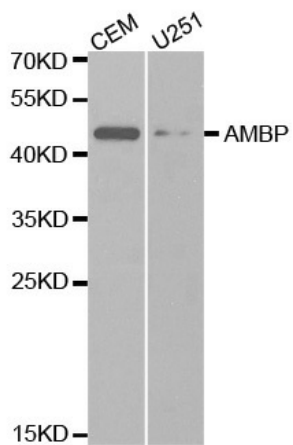
Product Type:	Primary Antibodies
Applications:	WB
Recommended Dilution:	WB 1:500 - 1:2000
Reactivity:	Human, Mouse
Host:	Rabbit
Isotype:	IgG
Clonality:	Polyclonal
Immunogen:	Recombinant protein of human AMBP
Formulation:	Store at -20°C (regular) and -80°C (long term). Avoid freeze / thaw cycles. Buffer: PBS with 0.02% sodium azide, 50% glycerol, pH7.3.
Concentration:	lot specific
Purification:	Affinity purification
Conjugation:	Unconjugated
Storage:	Store at -20°C as received.
Stability:	Stable for 12 months from date of receipt.
Predicted Protein Size:	352
Gene Name:	alpha-1-microglobulin/bikunin precursor
Database Link:	NP_001624 Entrez Gene 11699 Mouse Entrez Gene 259 Human P02760
Background:	This gene encodes a complex glycoprotein secreted in plasma. The precursor is proteolytically processed into distinct functioning proteins: alpha-1-microglobulin, which belongs to the superfamily of lipocalin transport proteins and may play a role in the regulation of inflammatory processes, and bikunin, which is a urinary trypsin inhibitor belonging to the superfamily of Kunitz-type protease inhibitors and plays an important role in many physiological and pathological processes. This gene is located on chromosome 9 in a cluster of lipocalin genes.
Synonyms:	A1M; EDC1; HCP; HI30; IATIL; ITI; ITIL; ITILC; UTI



[View online »](#)

Protein Families: Secreted Protein

Product images:



Western blot analysis of extracts of various cell lines, using AMBP antibody.