

## Product datasheet for **TA332441S**

### SFTPC Rabbit Polyclonal Antibody

#### Product data:

Product Type:	Primary Antibodies
Applications:	ICC/IF, IHC, WB
Recommended Dilution:	WB 1:500 - 1:2000;IF 1:50 - 1:200
Reactivity:	Human, Mouse, Rat
Host:	Rabbit
Isotype:	IgG
Clonality:	Polyclonal
Immunogen:	Recombinant protein of human SFTPC
Formulation:	Store at -20°C (regular) and -80°C (long term). Avoid freeze / thaw cycles. Buffer: PBS with 0.02% sodium azide, 50% glycerol, pH7.3.
Concentration:	lot specific
Purification:	Affinity purification
Conjugation:	Unconjugated
Storage:	Store at -20°C as received.
Stability:	Stable for 12 months from date of receipt.
Predicted Protein Size:	197
Gene Name:	surfactant protein C
Database Link:	<a href="#">NP_003009</a> <a href="#">Entrez Gene 20389 Mouse</a> <a href="#">Entrez Gene 50683 Rat</a> <a href="#">Entrez Gene 6440 Human</a> <a href="#">P11686</a>



[View online »](#)

**Background:**

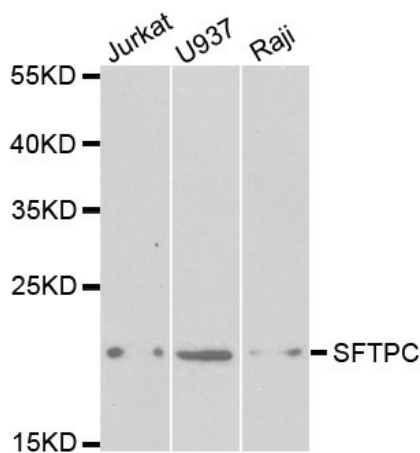
This gene encodes the pulmonary-associated surfactant protein C (SPC), an extremely hydrophobic surfactant protein essential for lung function and homeostasis after birth. Pulmonary surfactant is a surface-active lipoprotein complex composed of 90% lipids and 10% proteins which include plasma proteins and apolipoproteins SPA, SPB, SPC and SPD. The surfactant is secreted by the alveolar cells of the lung and maintains the stability of pulmonary tissue by reducing the surface tension of fluids that coat the lung. Multiple mutations in this gene have been identified, which cause pulmonary surfactant metabolism dysfunction type 2, also called pulmonary alveolar proteinosis due to surfactant protein C deficiency, and are associated with interstitial lung disease in older infants, children, and adults. Alternatively spliced transcript variants encoding different protein isoforms have been identified.

**Synonyms:**

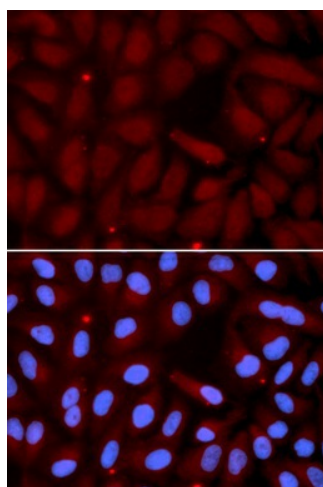
BRICD6; PSP-C; SFTP2; SMDP2; SP-C

**Protein Families:**

Secreted Protein, Transmembrane

**Product images:**

Western blot analysis of extracts of various cell lines, using SFTPC antibody.



Immunofluorescence analysis of U2OS cell using SFTPC antibody. Blue: DAPI for nuclear staining.