

## Product datasheet for **TA332438S**

### **GRIA1 Rabbit Polyclonal Antibody**

#### **Product data:**

Product Type:	Primary Antibodies
Applications:	ELISA, ICC/IF, IHC, WB
Recommended Dilution:	WB, 1:500 - 1:1000 IHC-P, 1:50 - 1:200 ELISA, Recommended starting concentration is 1 µg/mL. Please optimize the concentration based on your specific assay requirements.
Reactivity:	Human, Mouse, Rat
Host:	Rabbit
Isotype:	IgG
Clonality:	Polyclonal
Formulation:	Store at -20°C (regular) and -80°C (long term). Avoid freeze / thaw cycles. Buffer: PBS with 0.02% sodium azide, 50% glycerol, pH7.3.
Concentration:	lot specific
Purification:	Affinity purification
Conjugation:	Unconjugated
Storage:	Store at -20°C. Avoid freeze / thaw cycles.
Stability:	Stable for 12 months from date of receipt.
Predicted Protein Size:	102kDa
Gene Name:	glutamate ionotropic receptor AMPA type subunit 1
Database Link:	<a href="#">NP_000818</a> <a href="#">Entrez Gene 14799 Mouse</a> <a href="#">Entrez Gene 50592 Rat</a> <a href="#">Entrez Gene 2890 Human</a> <a href="#">P42261</a>



[View online »](#)

**Background:**

Glutamate receptors are the predominant excitatory neurotransmitter receptors in the mammalian brain and are activated in a variety of normal neurophysiologic processes. These receptors are heteromeric protein complexes with multiple subunits, each possessing transmembrane regions, and all arranged to form a ligand-gated ion channel. The classification of glutamate receptors is based on their activation by different pharmacologic agonists. This gene belongs to a family of alpha-amino-3-hydroxy-5-methyl-4-isoxazole propionate (AMPA) receptors. Alternatively spliced transcript variants encoding different isoforms have been found for this gene.

**Synonyms:**

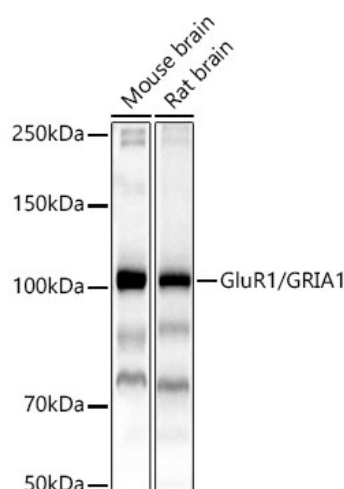
GluA1; GLUH1; GLUR1; GLURA; HBGR1

**Protein Families:**

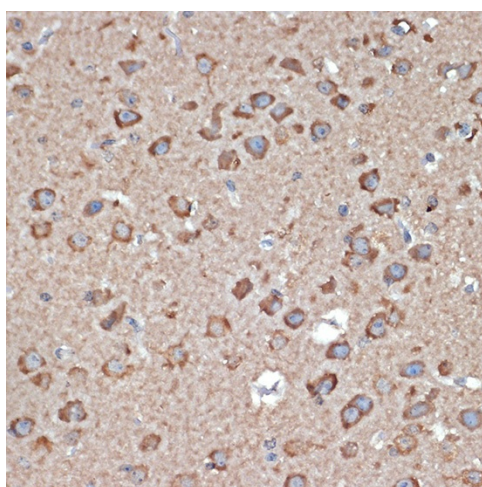
Druggable Genome, Ion Channels: Glutamate Receptors, Transmembrane

**Protein Pathways:**

Amyotrophic lateral sclerosis (ALS), Long-term depression, Long-term potentiation, Neuroactive ligand-receptor interaction

**Product images:**


Western blot analysis of various lysates



Immunohistochemistry analysis of paraffin-embedded Mouse brain using GluR1/GRIA1 Rabbit pAb ([TA332438]) at dilution of 1:100 (40x lens). Microwave antigen retrieval performed with 0.01M Tris/EDTA Buffer (pH 9.0) prior to IHC staining.