

Product datasheet for **TA332438**

GRIA1 Rabbit Polyclonal Antibody

Product data:

Product Type:	Primary Antibodies
Applications:	ELISA, ICC/IF, IHC, WB
Recommended Dilution:	WB,1:500 - 1:1000 IHC-P,1:50 - 1:200 ELISA,Recommended starting concentration is 1 µg/mL. Please optimize the concentration based on your specific assay requirements.
Reactivity:	Human, Mouse, Rat
Host:	Rabbit
Isotype:	IgG
Clonality:	Polyclonal
Formulation:	Buffer: PBS with 0.02% sodium azide,50% glycerol,pH7.3.
Concentration:	lot specific
Purification:	Affinity purification
Conjugation:	Unconjugated
Storage:	Store at -20°C. Avoid freeze / thaw cycles.
Stability:	Stable for 12 months from date of receipt.
Predicted Protein Size:	102kDa
Gene Name:	glutamate ionotropic receptor AMPA type subunit 1
Database Link:	NP_000818 Entrez Gene 14799 MouseEntrez Gene 50592 RatEntrez Gene 2890 Human P42261



[View online »](#)

Background:

Glutamate receptors are the predominant excitatory neurotransmitter receptors in the mammalian brain and are activated in a variety of normal neurophysiologic processes. These receptors are heteromeric protein complexes with multiple subunits, each possessing transmembrane regions, and all arranged to form a ligand-gated ion channel. The classification of glutamate receptors is based on their activation by different pharmacologic agonists. This gene belongs to a family of alpha-amino-3-hydroxy-5-methyl-4-isoxazole propionate (AMPA) receptors. Alternatively spliced transcript variants encoding different isoforms have been found for this gene.

Synonyms:

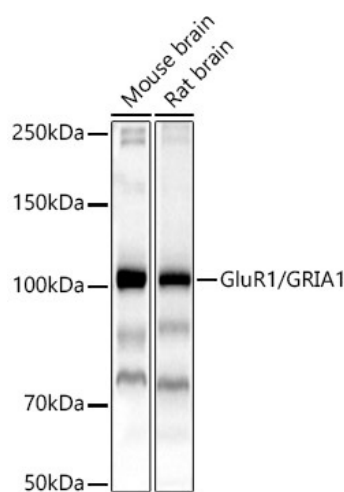
GluA1; GLUH1; GLUR1; GLURA; HBGR1

Protein Families:

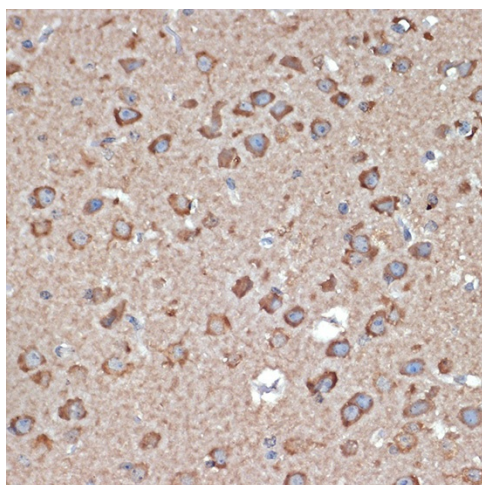
Druggable Genome, Ion Channels: Glutamate Receptors, Transmembrane

Protein Pathways:

Amyotrophic lateral sclerosis (ALS), Long-term depression, Long-term potentiation, Neuroactive ligand-receptor interaction

Product images:

Western blot analysis of various lysates



Immunohistochemistry analysis of paraffin-embedded Mouse brain using GluR1/GRIA1 Rabbit pAb (TA332438) at dilution of 1:100 (40x lens). Microwave antigen retrieval performed with 0.01M Tris/EDTA Buffer (pH 9.0) prior to IHC staining.