

Product datasheet for **TA332432**

POLR2C Rabbit Polyclonal Antibody

Product data:

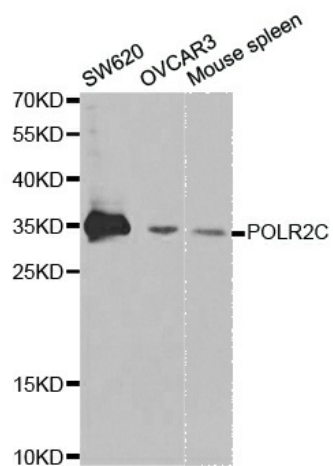
Product Type:	Primary Antibodies
Applications:	IP, WB
Recommended Dilution:	WB 1:500 - 1:2000
Reactivity:	Human, Mouse
Host:	Rabbit
Isotype:	IgG
Clonality:	Polyclonal
Immunogen:	Recombinant Protein of human POLR2C
Formulation:	Store at -20°C (regular) and -80°C (long term). Avoid freeze / thaw cycles. Buffer: PBS with 0.02% sodium azide, 50% glycerol, pH7.3.
Concentration:	lot specific
Purification:	Affinity purification
Conjugation:	Unconjugated
Storage:	Store at -20°C as received.
Stability:	Stable for 12 months from date of receipt.
Predicted Protein Size:	275
Gene Name:	polymerase (RNA) II subunit C
Database Link:	NP_116558 Entrez Gene 20021 Mouse Entrez Gene 5432 Human P19387
Background:	This gene encodes the third largest subunit of RNA polymerase II, the polymerase responsible for synthesizing messenger RNA in eukaryotes. The product of this gene contains a cysteine rich region and exists as a heterodimer with another polymerase subunit, POLR2J. These two subunits form a core subassembly unit of the polymerase. A pseudogene has been identified on chromosome 21.
Synonyms:	hRPB33; hsRPB3; RPB3; RPB31
Protein Families:	Druggable Genome, Transcription Factors



[View online »](#)

Protein Pathways: Huntington's disease, Metabolic pathways, Purine metabolism, Pyrimidine metabolism, RNA polymerase

Product images:



Western blot analysis of extracts of various cell lines, using POLR2C antibody.