

Product datasheet for **TA332424**

PLGF (PGF) Rabbit Polyclonal Antibody

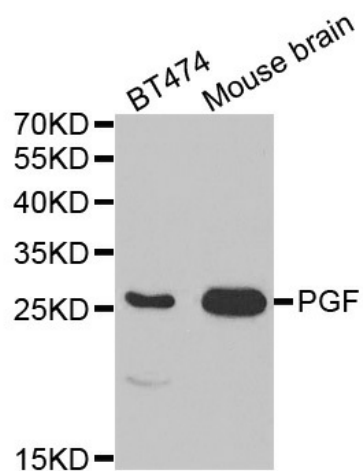
Product data:

Product Type:	Primary Antibodies
Applications:	WB
Recommended Dilution:	WB 1:500 - 1:2000
Reactivity:	Human, Mouse, Rat
Host:	Rabbit
Isotype:	IgG
Clonality:	Polyclonal
Immunogen:	Recombinant protein of human PGF
Formulation:	Store at -20°C (regular) and -80°C (long term). Avoid freeze / thaw cycles. Buffer: PBS with 0.02% sodium azide, 50% glycerol, pH7.3.
Concentration:	lot specific
Purification:	Affinity purification
Conjugation:	Unconjugated
Storage:	Store at -20°C as received.
Stability:	Stable for 12 months from date of receipt.
Predicted Protein Size:	221
Gene Name:	placental growth factor
Database Link:	NP_002623 Entrez Gene 18654 Mouse Entrez Gene 94203 Rat Entrez Gene 5228 Human P49763
Background:	This gene encodes a growth factor found in placenta which is homologous to vascular endothelial growth factor. Alternatively spliced transcripts encoding different isoforms have been found for this gene.
Synonyms:	D12S1900; PGFL; PIGF; PLGF; PIGF-2; SHGC-10760
Protein Families:	Druggable Genome, Secreted Protein
Protein Pathways:	Bladder cancer, Focal adhesion, mTOR signaling pathway, Pancreatic cancer, Pathways in cancer, Renal cell carcinoma



[View online »](#)

Product images:



Western blot analysis of extracts of various cell lines, using PGF antibody.