

## Product datasheet for **TA332423**

### IGFBP5 Rabbit Polyclonal Antibody

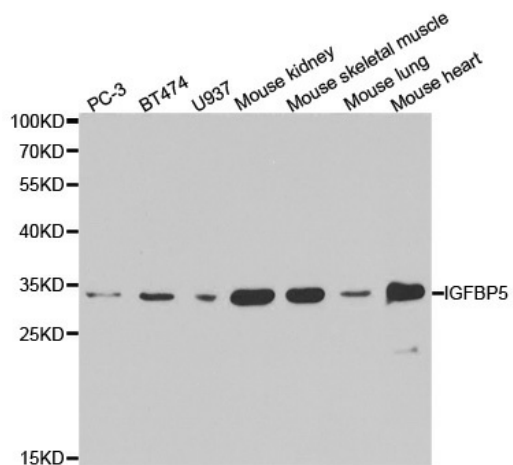
#### Product data:

Product Type:	Primary Antibodies
Applications:	WB
Recommended Dilution:	WB 1:500 - 1:2000
Reactivity:	Human, Mouse
Host:	Rabbit
Isotype:	IgG
Clonality:	Polyclonal
Immunogen:	Recombinant protein of human IGFBP5
Formulation:	Store at -20°C (regular) and -80°C (long term). Avoid freeze / thaw cycles. Buffer: PBS with 0.02% sodium azide, 50% glycerol, pH7.3.
Concentration:	lot specific
Purification:	Affinity purification
Conjugation:	Unconjugated
Storage:	Store at -20°C as received.
Stability:	Stable for 12 months from date of receipt.
Predicted Protein Size:	272
Gene Name:	insulin like growth factor binding protein 5
Database Link:	<a href="#">NP_000590</a> <a href="#">Entrez Gene 16011 Mouse</a> <a href="#">Entrez Gene 3488 Human</a> <a href="#">P24593</a>
Background:	IGFBP5, also named as IBP5, prolong the half-life of the IGFs and have been shown to either inhibit or stimulate the growth promoting effects of the IGFs on cell culture. It alter the interaction of IGFs with their cell surface receptors. This antibody is specific to IGFBP5.
Synonyms:	IBP5
Protein Families:	Druggable Genome, Secreted Protein



[View online »](#)

## Product images:



Western blot analysis of extracts of various cell lines, using IGFBP5 antibody.