

## Product datasheet for **TA332415**

### LOX 1 (OLR1) Rabbit Polyclonal Antibody

#### Product data:

|                         |                                                                                                                                                                                                                                                                                                                                                                                                                                                                                                                                                                                                         |
|-------------------------|---------------------------------------------------------------------------------------------------------------------------------------------------------------------------------------------------------------------------------------------------------------------------------------------------------------------------------------------------------------------------------------------------------------------------------------------------------------------------------------------------------------------------------------------------------------------------------------------------------|
| Product Type:           | Primary Antibodies                                                                                                                                                                                                                                                                                                                                                                                                                                                                                                                                                                                      |
| Applications:           | WB                                                                                                                                                                                                                                                                                                                                                                                                                                                                                                                                                                                                      |
| Recommended Dilution:   | WB 1:500 - 1:2000                                                                                                                                                                                                                                                                                                                                                                                                                                                                                                                                                                                       |
| Reactivity:             | Human, Mouse                                                                                                                                                                                                                                                                                                                                                                                                                                                                                                                                                                                            |
| Host:                   | Rabbit                                                                                                                                                                                                                                                                                                                                                                                                                                                                                                                                                                                                  |
| Isotype:                | IgG                                                                                                                                                                                                                                                                                                                                                                                                                                                                                                                                                                                                     |
| Clonality:              | Polyclonal                                                                                                                                                                                                                                                                                                                                                                                                                                                                                                                                                                                              |
| Immunogen:              | Recombinant protein of human OLR1                                                                                                                                                                                                                                                                                                                                                                                                                                                                                                                                                                       |
| Formulation:            | Store at -20°C (regular) and -80°C (long term). Avoid freeze / thaw cycles. Buffer: PBS with 0.02% sodium azide, 50% glycerol, pH7.3.                                                                                                                                                                                                                                                                                                                                                                                                                                                                   |
| Concentration:          | lot specific                                                                                                                                                                                                                                                                                                                                                                                                                                                                                                                                                                                            |
| Purification:           | Affinity purification                                                                                                                                                                                                                                                                                                                                                                                                                                                                                                                                                                                   |
| Conjugation:            | Unconjugated                                                                                                                                                                                                                                                                                                                                                                                                                                                                                                                                                                                            |
| Storage:                | Store at -20°C as received.                                                                                                                                                                                                                                                                                                                                                                                                                                                                                                                                                                             |
| Stability:              | Stable for 12 months from date of receipt.                                                                                                                                                                                                                                                                                                                                                                                                                                                                                                                                                              |
| Predicted Protein Size: | 31 kDa                                                                                                                                                                                                                                                                                                                                                                                                                                                                                                                                                                                                  |
| Gene Name:              | oxidized low density lipoprotein receptor 1                                                                                                                                                                                                                                                                                                                                                                                                                                                                                                                                                             |
| Database Link:          | <a href="#">NP_002534</a><br><a href="#">Entrez Gene 108078 Mouse</a> <a href="#">Entrez Gene 4973 Human</a><br><a href="#">P78380</a>                                                                                                                                                                                                                                                                                                                                                                                                                                                                  |
| Background:             | This gene encodes a low density lipoprotein receptor that belongs to the C-type lectin superfamily. This gene is regulated through the cyclic AMP signaling pathway. The encoded protein binds, internalizes and degrades oxidized low-density lipoprotein. This protein may be involved in the regulation of Fas-induced apoptosis. This protein may play a role as a scavenger receptor. Mutations of this gene have been associated with atherosclerosis, risk of myocardial infarction, and may modify the risk of Alzheimer's disease. Alternate splicing results in multiple transcript variants. |
| Synonyms:               | CLEC8A; LOX1; LOXIN; SCARE1; SLOX1                                                                                                                                                                                                                                                                                                                                                                                                                                                                                                                                                                      |

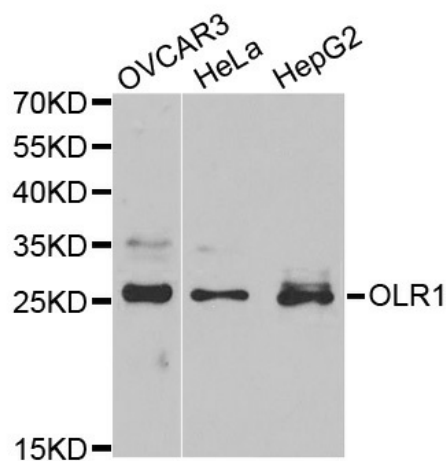


[View online »](#)

Protein Families: Druggable Genome, Secreted Protein, Transmembrane

Protein Pathways: PPAR signaling pathway

### Product images:



Western blot analysis of extracts of various cell lines, using OLR1 antibody.