

Product datasheet for **TA332408**

CDK9 Rabbit Polyclonal Antibody

Product data:

Product Type:	Primary Antibodies
Applications:	WB
Recommended Dilution:	WB 1:500 - 1:2000
Reactivity:	Human, Mouse, Rat
Host:	Rabbit
Isotype:	IgG
Clonality:	Polyclonal
Immunogen:	Recombinant protein of human CDK9
Formulation:	Store at -20°C (regular) and -80°C (long term). Avoid freeze / thaw cycles. Buffer: PBS with 0.02% sodium azide, 50% glycerol, pH7.3.
Concentration:	lot specific
Purification:	Affinity purification
Conjugation:	Unconjugated
Storage:	Store at -20°C as received.
Stability:	Stable for 12 months from date of receipt.
Predicted Protein Size:	372
Gene Name:	cyclin-dependent kinase 9
Database Link:	NP_001252 Entrez Gene 107951 MouseEntrez Gene 362110 RatEntrez Gene 1025 Human P50750

Background: The protein encoded by this gene is a member of the cyclin-dependent protein kinase (CDK) family. CDK family members are highly similar to the gene products of *S. cerevisiae* cdc28, and *S. pombe* cdc2, and known as important cell cycle regulators. This kinase was found to be a component of the multiprotein complex TAK/P-TEFb, which is an elongation factor for RNA polymerase II-directed transcription and functions by phosphorylating the C-terminal domain of the largest subunit of RNA polymerase II. This protein forms a complex with and is regulated by its regulatory subunit cyclin T or cyclin K. HIV-1 Tat protein was found to interact with this protein and cyclin T, which suggested a possible involvement of this protein in AIDS.

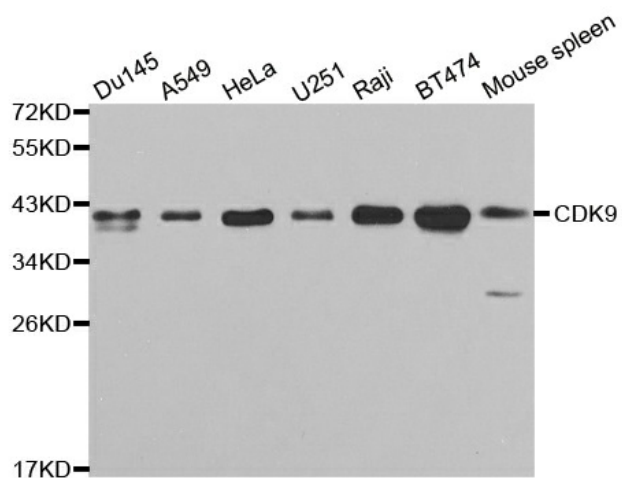


[View online »](#)

Synonyms: C-2k; CDC2L4; CTK1; PITALRE; TAK

Protein Families: Druggable Genome, Protein Kinase, Transcription Factors

Product images:



Western blot analysis of extracts of various cell lines, using CDK9 antibody.