

Product datasheet for **TA332401S**

Butyrylcholinesterase (BCHE) Rabbit Polyclonal Antibody

Product data:

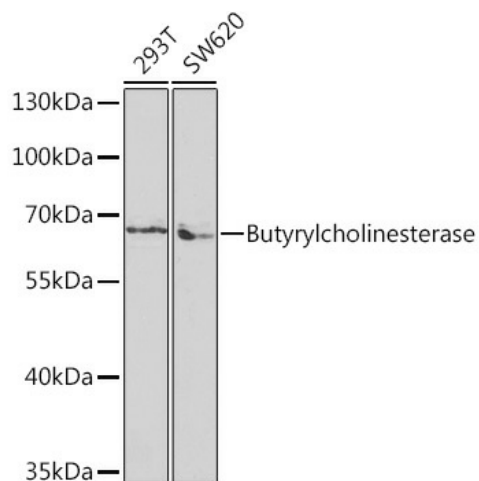
Product Type:	Primary Antibodies
Applications:	ELISA, WB
Recommended Dilution:	WB, 1:500 - 1:2000 ELISA, Recommended starting concentration is 1 µg/mL. Please optimize the concentration based on your specific assay requirements.
Reactivity:	Human, Mouse, Rat
Host:	Rabbit
Isotype:	IgG
Clonality:	Polyclonal
Formulation:	Store at -20°C (regular) and -80°C (long term). Avoid freeze / thaw cycles. Buffer: PBS with 0.02% sodium azide, 50% glycerol, pH7.3.
Concentration:	lot specific
Purification:	Affinity purification
Conjugation:	Unconjugated
Storage:	Store at -20°C. Avoid freeze / thaw cycles.
Stability:	Stable for 12 months from date of receipt.
Predicted Protein Size:	68kDa
Gene Name:	butyrylcholinesterase
Database Link:	NP_000046 Entrez Gene 12038 Mouse Entrez Gene 65036 Rat Entrez Gene 590 Human P06276
Background:	This gene encodes a cholinesterase enzyme and member of the type-B carboxylesterase/lipase family of proteins. The encoded enzyme exhibits broad substrate specificity and is involved in the detoxification of poisons including organophosphate nerve agents and pesticides, and the metabolism of drugs including cocaine, heroin and aspirin. Humans homozygous for certain mutations in this gene exhibit prolonged apnea after administration of the muscle relaxant succinylcholine.
Synonyms:	CHE1; CHE2; E1



[View online »](#)

Protein Families: Druggable Genome, Transmembrane

Product images:



Western blot analysis of various lysates using Butyrylcholinesterase Rabbit pAb (TA332401S) at 1:1000 dilution.
 Secondary antibody: HRP-conjugated Goat anti-Rabbit IgG (H+L) (AS014) at 1:10000 dilution.
 Lysates/proteins: 25µg per lane.
 Blocking buffer: 3% nonfat dry milk in TBST.
 Detection: ECL Basic Kit (RM00020).
 Exposure time: 30s.