

## Product datasheet for **TA332389S**

### beta Arrestin 1 (ARRB1) Rabbit Polyclonal Antibody

#### Product data:

Product Type:	Primary Antibodies
Applications:	ELISA, ICC/IF, IHC, IP, WB
Recommended Dilution:	WB,1:500 - 1:1000 IHC-P,1:50 - 1:200 IF/ICC,1:50 - 1:200 IP,0.5µg-4µg antibody for 200µg-400µg extracts of whole cells ELISA,Recommended starting concentration is 1 µg/mL. Please optimize the concentration based on your specific assay requirements.
Reactivity:	Human, Mouse, Rat
Host:	Rabbit
Isotype:	IgG
Clonality:	Polyclonal
Formulation:	PBS with 0.05% proclin300,50% glycerol,pH7.3.
Concentration:	lot specific
Purification:	Affinity purification
Conjugation:	Unconjugated
Storage:	Store at -20°C. Avoid freeze / thaw cycles.
Stability:	Stable for 12 months from date of receipt.
Predicted Protein Size:	47kDa
Gene Name:	arrestin beta 1
Database Link:	<a href="#">NP_064647</a> <a href="#">Entrez Gene 25387 Rat</a> <a href="#">Entrez Gene 109689 Mouse</a> <a href="#">Entrez Gene 408 Human</a> <a href="#">P49407</a>



[View online »](#)

**Background:**

Members of arrestin/beta-arrestin protein family are thought to participate in agonist-mediated desensitization of G-protein-coupled receptors and cause specific dampening of cellular responses to stimuli such as hormones, neurotransmitters, or sensory signals. Arrestin beta 1 is a cytosolic protein and acts as a cofactor in the beta-adrenergic receptor kinase (BARK) mediated desensitization of beta-adrenergic receptors. Besides the central nervous system, it is expressed at high levels in peripheral blood leukocytes, and thus the BARK/beta-arrestin system is believed to play a major role in regulating receptor-mediated immune functions. Alternatively spliced transcripts encoding different isoforms of arrestin beta 1 have been described.

**Synonyms:**

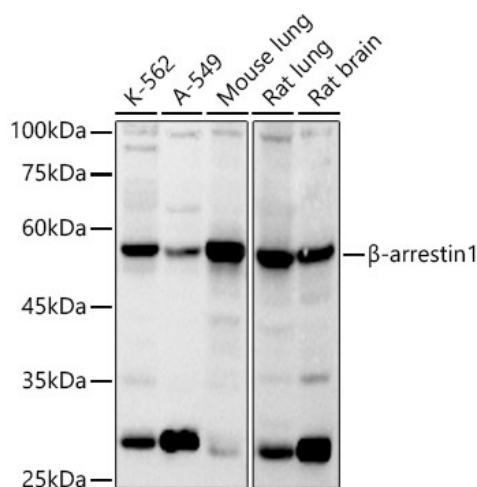
ARB1; ARR1

**Protein Families:**

Druggable Genome

**Protein Pathways:**

Chemokine signaling pathway, Endocytosis, MAPK signaling pathway

**Product images:**


Western blot analysis of various lysates using  $\beta$ -arrestin1 Rabbit pAb ([TA332389]) at 1:1000 dilution.

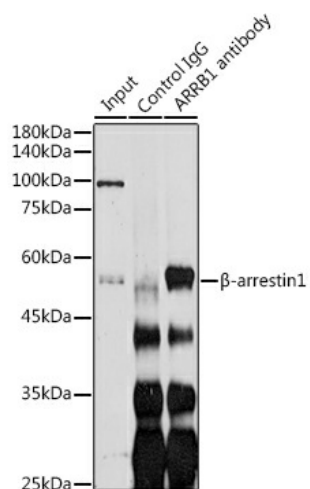
Secondary antibody: HRP-conjugated Goat anti-Rabbit IgG (H+L) (AS014) at 1:10000 dilution.

Lysates/proteins: 25 $\mu$ g per lane.

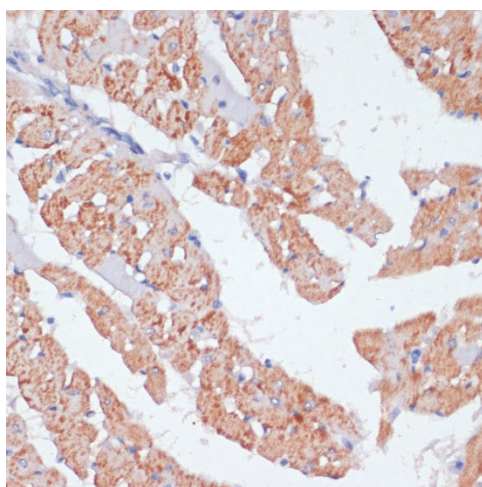
Blocking buffer: 3% nonfat dry milk in TBST.

Detection: ECL Basic Kit (RM00020).

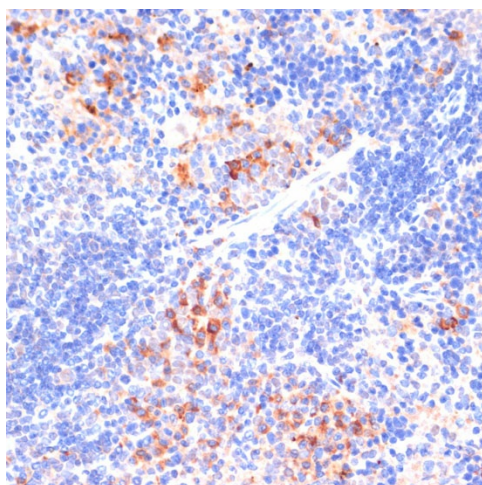
Exposure time: 30s.



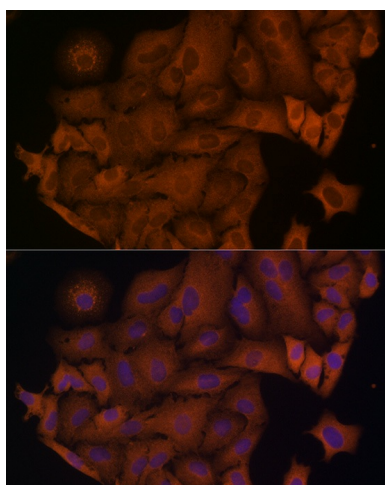
Immunoprecipitation analysis of 200 µg extracts of SH-SY5Y cells using 3 µg  $\beta$ -arrestin1 antibody ([TA332389]). Western blot was performed from the immunoprecipitate using  $\beta$ -arrestin1 ([TA332389]) at a dilution of 1:1000.



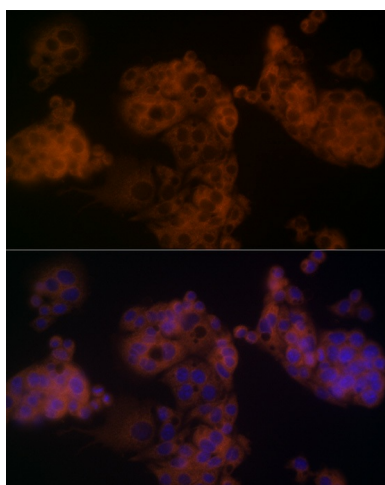
Immunohistochemistry analysis of paraffin-embedded Rat heart using  $\beta$ -arrestin1 Rabbit pAb ([TA332389]) at dilution of 1:100 (40x lens). Microwave antigen retrieval performed with 0.01M PBS Buffer (pH 7.2) prior to IHC staining.



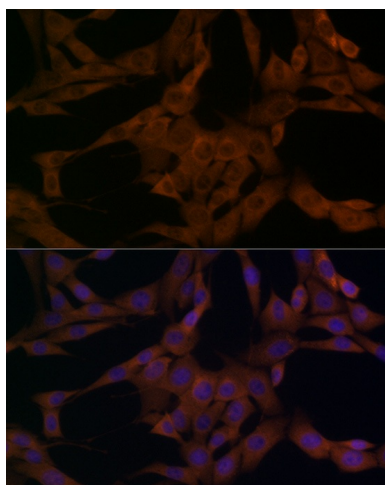
Immunohistochemistry analysis of paraffin-embedded Mouse spleen using  $\beta$ -arrestin1 Rabbit pAb ([TA332389]) at dilution of 1:100 (40x lens). Microwave antigen retrieval performed with 0.01M PBS Buffer (pH 7.2) prior to IHC staining.



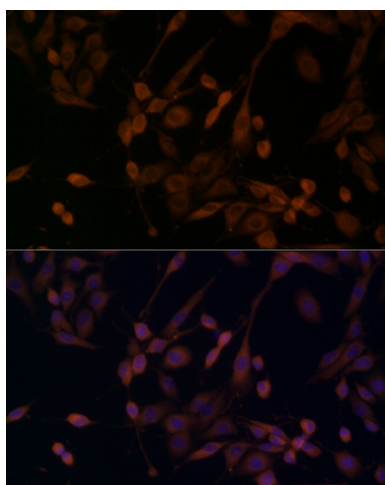
Immunofluorescence analysis of A-549 cells using  $\beta$ -arrestin1 Rabbit pAb ([TA332389]) at dilution of 1:100 (40x lens). Secondary antibody: Cy3-conjugated Goat anti-Rabbit IgG (H+L) (AS007) at 1:500 dilution. Blue: DAPI for nuclear staining.



Immunofluorescence analysis of HepG2 cells using  $\beta$ -arrestin1 Rabbit pAb ([TA332389]) at dilution of 1:100 (40x lens). Secondary antibody: Cy3-conjugated Goat anti-Rabbit IgG (H+L) (AS007) at 1:500 dilution. Blue: DAPI for nuclear staining.



Immunofluorescence analysis of NIH/3T3 cells using  $\beta$ -arrestin1 Rabbit pAb ([TA332389]) at dilution of 1:100 (40x lens). Secondary antibody: Cy3-conjugated Goat anti-Rabbit IgG (H+L) (AS007) at 1:500 dilution. Blue: DAPI for nuclear staining.



Immunofluorescence analysis of PC-12 cells using  $\beta$ -arrestin1 Rabbit pAb ([TA332389]) at dilution of 1:100 (40x lens). Secondary antibody: Cy3-conjugated Goat anti-Rabbit IgG (H+L) (AS007) at 1:500 dilution. Blue: DAPI for nuclear staining.