

Product datasheet for TA332383S

IGF1 Rabbit Polyclonal Antibody

Product data:

Product Type:	Primary Antibodies
Applications:	ELISA, IHC, WB
Recommended Dilution:	WB, 1:500 - 1:2000 IHC-P, 1:50 - 1:200 ELISA, Recommended starting concentration is 1 µg/mL. Please optimize the concentration based on your specific assay requirements.
Reactivity:	Human, Mouse
Host:	Rabbit
Isotype:	IgG
Clonality:	Polyclonal
Formulation:	Store at -20°C (regular) and -80°C (long term). Avoid freeze / thaw cycles. Buffer: PBS with 0.02% sodium azide, 50% glycerol, pH7.3.
Concentration:	lot specific
Purification:	Affinity purification
Conjugation:	Unconjugated
Storage:	Store at -20°C. Avoid freeze / thaw cycles.
Stability:	Stable for 12 months from date of receipt.
Predicted Protein Size:	22kDa
Gene Name:	insulin like growth factor 1
Database Link:	NP_000609 Entrez Gene 16000 Mouse Entrez Gene 3479 Human P05019
Background:	The protein encoded by this gene is similar to insulin in function and structure and is a member of a family of proteins involved in mediating growth and development. The encoded protein is processed from a precursor, bound by a specific receptor, and secreted. Defects in this gene are a cause of insulin-like growth factor I deficiency. Alternative splicing results in multiple transcript variants encoding different isoforms that may undergo similar processing to generate mature protein.

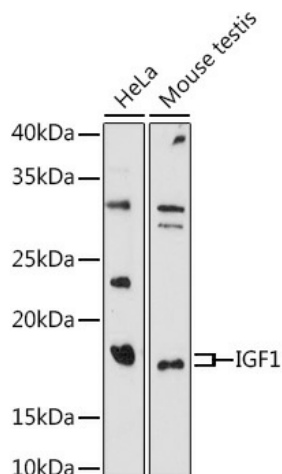

[View online »](#)

Synonyms: IGF-I; IGF1; MGF

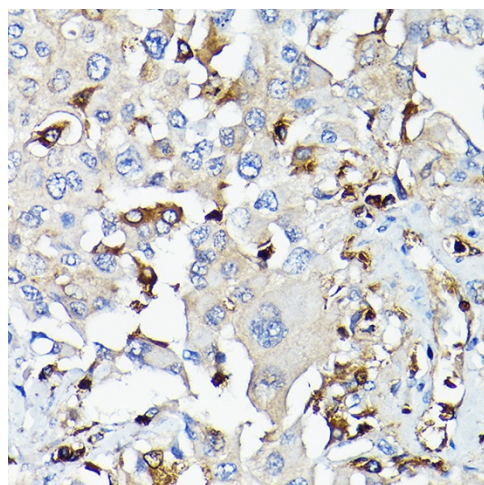
Protein Families: Druggable Genome, ES Cell Differentiation/IPS, Secreted Protein

Protein Pathways: Dilated cardiomyopathy, Focal adhesion, Glioma, Hypertrophic cardiomyopathy (HCM), Long-term depression, Melanoma, mTOR signaling pathway, Oocyte meiosis, p53 signaling pathway, Pathways in cancer, Progesterone-mediated oocyte maturation, Prostate cancer

Product images:



Western blot analysis of various lysates using IGF1 Rabbit pAb ([TA332383]) at 1:1000 dilution. Secondary antibody: HRP-conjugated Goat anti-Rabbit IgG (H+L) (AS014) at 1:10000 dilution. Lysates/proteins: 25µg per lane. Blocking buffer: 3% nonfat dry milk in TBST. Detection: ECL Basic Kit (RM00020). Exposure time: 180s.



Immunohistochemistry analysis of paraffin-embedded Human lung cancer using IGF1 Rabbit pAb ([TA332383]) at dilution of 1:100 (40x lens). High pressure antigen retrieval performed with 0.01M Citrate Buffer (pH 6.0) prior to IHC staining.