

## Product datasheet for **TA332381S**

### **p27 KIP 1 (CDKN1B) Rabbit Polyclonal Antibody**

#### **Product data:**

Product Type:	Primary Antibodies
Applications:	ICC/IF, WB
Recommended Dilution:	WB 1:200 - 1:500;IF 1:20 - 1:50
Reactivity:	Human, Mouse
Host:	Rabbit
Isotype:	IgG
Clonality:	Polyclonal
Immunogen:	Recombinant protein of human CDKN1B
Formulation:	PBS with 0.09% Sodium azide,50% glycerol,pH7.3.
Concentration:	lot specific
Purification:	Affinity purification
Conjugation:	Unconjugated
Storage:	Store at -20°C as received.
Stability:	Stable for 12 months from date of receipt.
Predicted Protein Size:	27 kDa
Gene Name:	cyclin-dependent kinase inhibitor 1B
Database Link:	<a href="#">NP_004055</a> <a href="#">Entrez Gene 12576 Mouse</a> <a href="#">Entrez Gene 1027 Human</a> <a href="#">P46527</a>

**Background:** CDKN1B Kip1 is a member of the Cip/Kip family of cyclin-dependent kinase inhibitors. Like its relatives, p57 Kip2 and p21 Waf1/Cip1, the ability to enforce the G1 restriction point is derived from its inhibitory binding to CDK2/cyclin E and other CDK/cyclin complexes. Expression levels of CDKN1B are upregulated in quiescent cells and in cells treated with cAMP or other negative cell cycle regulators. Downregulation of CDKN1B can be induced by treatment with interleukin 2 or other mitogens; this involves phosphorylation of CDKN1B and its degradation by the ubiquitin-proteasome pathway (1-4).

**Synonyms:** CDKN4; KIP1; MEN1B; MEN4; P27KIP1

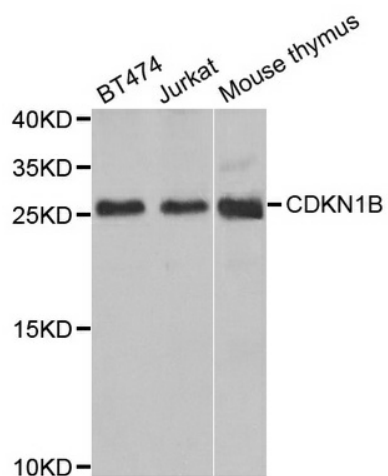


[View online »](#)

**Protein Families:** Druggable Genome

**Protein Pathways:** Cell cycle, Chronic myeloid leukemia, ErbB signaling pathway, Pathways in cancer, Prostate cancer, Small cell lung cancer

**Product images:**



Western blot analysis of extracts of various cell lines, using CDKN1B antibody.