

Product datasheet for **TA332374**

DOK4 Rabbit Polyclonal Antibody

Product data:

Product Type:	Primary Antibodies
Applications:	ICC/IF, IHC, WB
Recommended Dilution:	WB 1:500 - 1:2000;IF 1:50- 1:200
Reactivity:	Human, Mouse, Rat
Host:	Rabbit
Isotype:	IgG
Clonality:	Polyclonal
Immunogen:	Recombinant Protein of human DOK4
Formulation:	Store at -20°C (regular) and -80°C (long term). Avoid freeze / thaw cycles. Buffer: PBS with 0.02% sodium azide, 50% glycerol, pH7.3.
Concentration:	lot specific
Purification:	Affinity purification
Conjugation:	Unconjugated
Storage:	Store at -20°C as received.
Stability:	Stable for 12 months from date of receipt.
Predicted Protein Size:	326
Gene Name:	docking protein 4
Database Link:	NP_060580 Entrez Gene 114255 MouseEntrez Gene 361364 RatEntrez Gene 55715 Human Q8TEW6



[View online »](#)

Background:

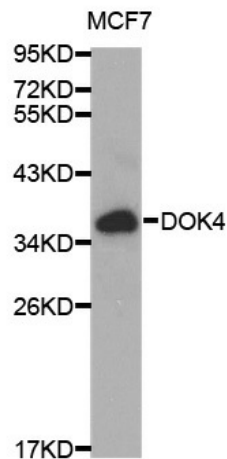
The downstream of kinase family (Dok-1-7) are members of a class of docking proteins that interact with receptor tyrosine kinases and, via this interaction, mediate biological responses within the body. Dok-4 (Downstream of kinase-4) is a 326 amino acid protein that contains one PH domain and one IRS-type PTB domain and belongs to the Dok family of interacting proteins. Expressed in a variety of tissues with highest expression in liver, heart, kidney and skeletal muscle, Dok-4 plays an important role in Ret-mediated neurite outgrowth and may link Ret with downstream effectors during neuronal differentiation. Additionally, Dok-4 is thought to play a positive role in the activation of MAPK pathways and may participate in T-cell induced immune system regulation. Overexpression of Dok-4 is associated with clear cell renal cell carcinoma, suggesting a role for Dok-4 in tumorigenesis.

Synonyms:

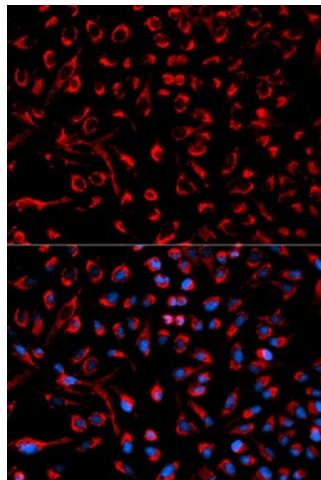
IRS-5; IRS5

Protein Families:

Druggable Genome

Product images:

Western blot analysis of extracts of MCF7 cells, using DOK4 antibody.



Immunofluorescence analysis of HeLa cell using DOK4 antibody. Blue: DAPI for nuclear staining.