

## Product datasheet for **TA332366**

### MTTP Rabbit Polyclonal Antibody

#### Product data:

Product Type:	Primary Antibodies
Applications:	WB
Recommended Dilution:	WB
Reactivity:	Mouse
Host:	Rabbit
Isotype:	IgG
Clonality:	Polyclonal
Immunogen:	The immunogen for Anti-MTTP Antibody is: synthetic peptide directed towards the C-terminal region of MOUSE MTTP. Synthetic peptide located within the following region: QVVIEAQGLEALIAATPDEGEENLDSYAGMSAILFDVQLRPVTFNGYS
Formulation:	Liquid. Purified antibody supplied in 1x PBS buffer with 0.09% (w/v) sodium azide and 2% sucrose. <i>Note that this product is shipped as lyophilized powder to China customers.</i>
Purification:	Affinity Purified
Conjugation:	Unconjugated
Storage:	Store at -20°C as received.
Stability:	Stable for 12 months from date of receipt.
Predicted Protein Size:	98 kDa
Gene Name:	microsomal triglyceride transfer protein
Database Link:	<a href="#">NP_000244</a> <a href="#">Entrez Gene 17777 Mouse</a> <a href="#">P55157</a>
Background:	MTP encodes the large subunit of the heterodimeric microsomal triglyceride transfer protein. Protein disulfide isomerase (PDI) completes the heterodimeric microsomal triglyceride transfer protein, which has been shown to play a central role in lipoprotein assembly. Mutations in MTP can cause abetalipoproteinemia.
Synonyms:	ABL; MTP

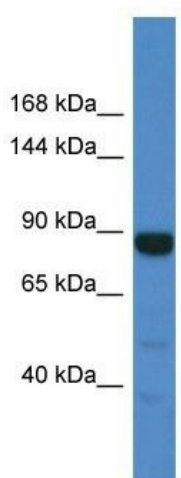


[View online »](#)

**Note:** Immunogen sequence homology: Dog: 100%; Pig: 100%; Rat: 100%; Horse: 100%; Human: 100%; Mouse: 100%; Bovine: 100%; Rabbit: 100%; Guinea pig: 100%; Zebrafish: 79%

**Protein Families:** Druggable Genome

### Product images:



Host: Rabbit  
Target Name: MTTP  
Sample Tissue: Mouse Liver Lysate  
Antibody Dilution: 1.0µg/ml

Host: Rabbit; Target Name: MTTP; Sample Tissue: Mouse Liver lysates; Antibody Dilution: 1.0ug/ml