

Product datasheet for **TA332364**

PCCA Rabbit Polyclonal Antibody

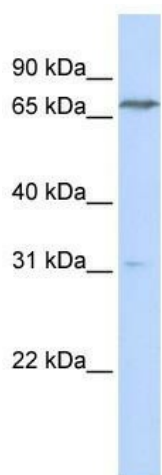
Product data:

Product Type:	Primary Antibodies
Applications:	WB
Recommended Dilution:	WB
Reactivity:	Human
Host:	Rabbit
Isotype:	IgG
Clonality:	Polyclonal
Immunogen:	The immunogen for Anti-PCCA Antibody: synthetic peptide directed towards the N terminal of human PCCA. Synthetic peptide located within the following region: LYYSRQCLMVSRLGSVGYPNEKTFDKILVANRGEIACRVIRTCKKMG
Formulation:	Liquid. Purified antibody supplied in 1x PBS buffer with 0.09% (w/v) sodium azide and 2% sucrose. <i>Note that this product is shipped as lyophilized powder to China customers.</i>
Conjugation:	Unconjugated
Storage:	Store at -20°C as received.
Stability:	Stable for 12 months from date of receipt.
Predicted Protein Size:	75 kDa
Gene Name:	propionyl-CoA carboxylase alpha subunit
Database Link:	NP_000273 Entrez Gene 5095 Human P05165
Background:	PCCA is the alpha subunit of the heterodimeric mitochondrial enzyme Propionyl-CoA carboxylase. PCCA is the biotin-binding region of this enzyme. Mutations in either PCCA or PCCB (encoding the beta subunit) lead to an enzyme deficiency resulting in propionic acidemia. The protein encoded by this gene is the alpha subunit of the heterodimeric mitochondrial enzyme Propionyl-CoA carboxylase. PCCA encodes the biotin-binding region of this enzyme. Mutations in either PCCA or PCCB (encoding the beta subunit) lead to an enzyme deficiency resulting in propionic acidemia. Two transcript variants encoding different isoforms have been found for this gene.



[View online »](#)

- Synonyms:** alpha polypeptide; mitochondrial; PCCase alpha subunit; propanoyl-CoA:carbon dioxide ligase alpha subunit; propionyl-CoA carboxylase alpha chain; propionyl-coenzyme A carboxylase; Propionyl Coenzyme A carboxylase alpha polypeptide
- Note:** Immunogen sequence homology: Human: 100%; Dog: 86%; Pig: 86%; Rat: 86%; Bovine: 86%; Rabbit: 86%; Horse: 83%; Mouse: 77%; Zebrafish: 75%
- Protein Families:** Druggable Genome
- Protein Pathways:** Metabolic pathways, Propanoate metabolism, Valine, leucine and isoleucine degradation

Product images:

WB Suggested Anti-PCCA Antibody Titration: 0.2-1 ug/ml; ELISA Titer: 1: 312500; Positive Control: Transfected 293T