

Product datasheet for **TA332363**

PHKG2 Rabbit Polyclonal Antibody

Product data:

Product Type:	Primary Antibodies
Applications:	IHC, WB
Recommended Dilution:	WB, IHC
Reactivity:	Human, Mouse
Host:	Rabbit
Isotype:	IgG
Clonality:	Polyclonal
Immunogen:	The immunogen for Anti-PHKG2 Antibody: synthetic peptide directed towards the N terminal of human PHKG2. Synthetic peptide located within the following region: EDELDPWAAAKEFYQKYDPKDVIGRGVSSVVRRCVHRATGHEFAVKIMEV
Formulation:	Liquid. Purified antibody supplied in 1x PBS buffer with 0.09% (w/v) sodium azide and 2% sucrose. <i>Note that this product is shipped as lyophilized powder to China customers.</i>
Conjugation:	Unconjugated
Storage:	Store at -20°C as received.
Stability:	Stable for 12 months from date of receipt.
Predicted Protein Size:	46 kDa
Gene Name:	phosphorylase kinase catalytic subunit gamma 2
Database Link:	NP_000285 Entrez Gene 68961 Mouse Entrez Gene 5261 Human P15735
Background:	Mutations in PHKG2 along with PHKA2 and PHKB, all three different genes of phosphorylase kinase (Phk) subunits, can give rise to glycogen storage disease of the liver. The autosomal-recessive, liver-specific variant of Phk deficiency is caused by mutations in the gene encoding the testis/liver isoform of the catalytic gamma subunit, PHKG2.
Synonyms:	GSD9C



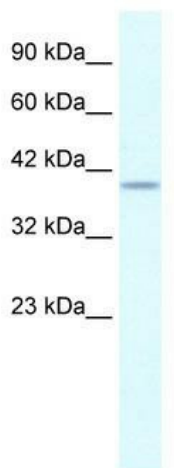
[View online »](#)

Note: Immunogen sequence homology: Dog: 100%; Pig: 100%; Rat: 100%; Goat: 100%; Human: 100%; Sheep: 100%; Bovine: 100%; Rabbit: 100%; Guinea pig: 100%; Mouse: 93%; Zebrafish: 93%

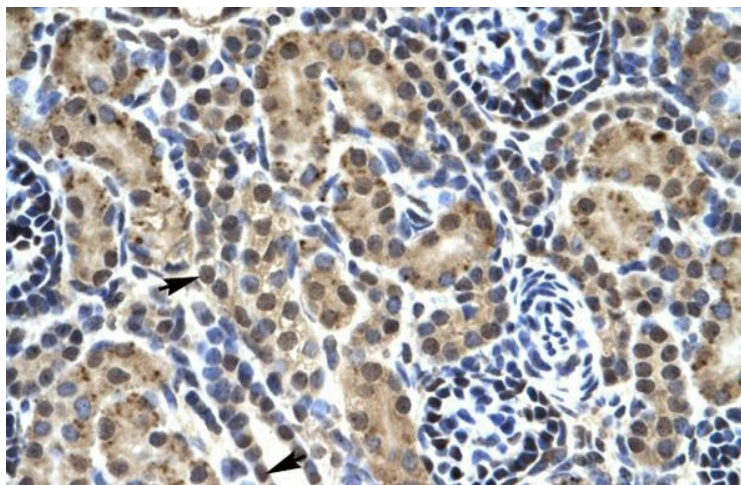
Protein Families: Druggable Genome, Protein Kinase

Protein Pathways: Calcium signaling pathway, Insulin signaling pathway

Product images:



WB Suggested Anti-PHKG2 Antibody Titration: 0.2-1 ug/ml; Positive Control: HepG2 cell lysate. PHKG2 is supported by BioGPS gene expression data to be expressed in HepG2



Human kidney