

Product datasheet for **TA332360**

HNF1 beta (HNF1B) Rabbit Polyclonal Antibody

Product data:

Product Type:	Primary Antibodies
Applications:	WB
Recommended Dilution:	WB
Reactivity:	Human
Host:	Rabbit
Isotype:	IgG
Clonality:	Polyclonal
Immunogen:	The immunogen for Anti-HNF1B Antibody: synthetic peptide directed towards the N terminal of human HNF1B. Synthetic peptide located within the following region: NFGVKLETLPSPGSGAEPDTKPVFHTLTNGHAKGRLSGDEGSEDGDDYD
Formulation:	Liquid. Purified antibody supplied in 1x PBS buffer with 0.09% (w/v) sodium azide and 2% sucrose. <i>Note that this product is shipped as lyophilized powder to China customers.</i>
Conjugation:	Unconjugated
Storage:	Store at -20°C as received.
Stability:	Stable for 12 months from date of receipt.
Predicted Protein Size:	61 kDa
Gene Name:	HNF1 homeobox B
Database Link:	NP_000449 Entrez Gene 6928 Human P35680



[View online »](#)

Background:

HNF1B is a member of the transcription factor superfamily. It forms heterodimers with another member of this transcription factor family, HNF1A. Multiple alternatively spliced transcript variants have been described, however the biological validity all of these variants needs to be determined. This gene encodes a member of the transcription factor superfamily. The encoded protein forms heterodimers with another member of this transcription factor family, HNF1A. Multiple alternatively spliced transcript variants have been described, however the biological validity all of these variants needs to be determined. Publication Note: This RefSeq record includes a subset of the publications that are available for this gene. Please see the Entrez Gene record to access additional publications. PRIMARYREFSEQ_SPAN PRIMARY_IDENTIFIER PRIMARY_SPAN COMP 1-473 DC340648.1 1-473 474-1994 BC017714.1 441-1961 1995-2544 AC091199.6 29528-30077 2545-2842 AI797324.1 1-298 c

Synonyms:

FJHN; HNF-1-beta; HNF-1B; HNF1beta; HNF2; HPC11; LF-B3; LFB3; MODY5; TCF-2; TCF2; VHNF1

Note:

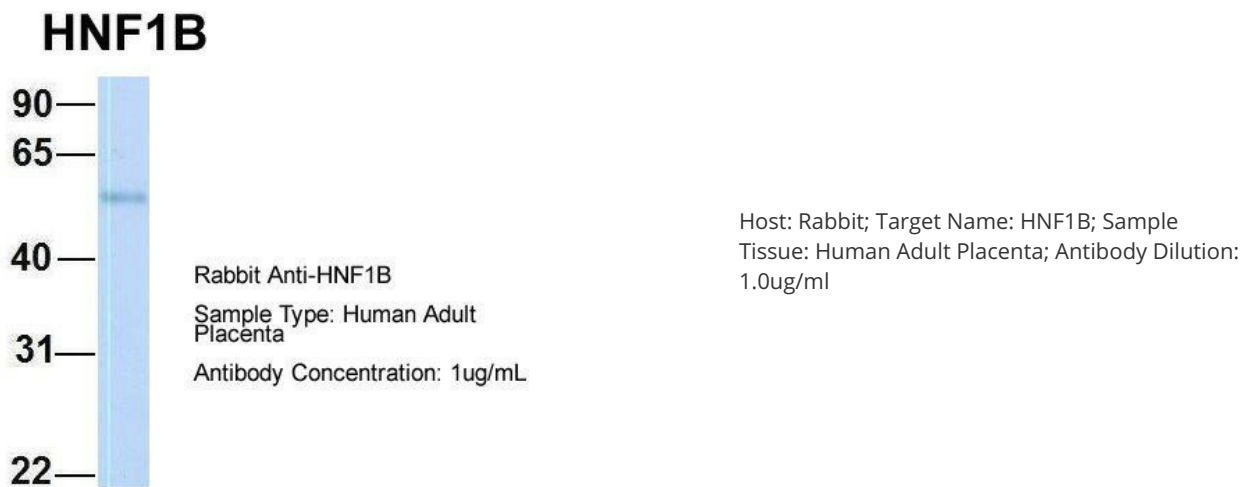
Immunogen sequence homology: Pig: 100%; Horse: 100%; Human: 100%; Bovine: 100%; Dog: 93%; Rat: 92%; Guinea pig: 92%; Zebrafish: 91%; Mouse: 86%

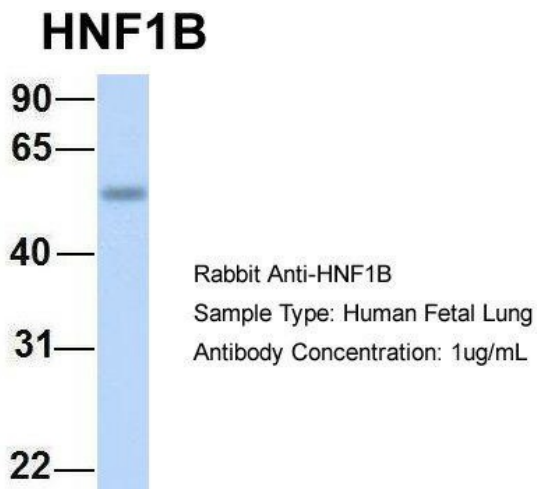
Protein Families:

Druggable Genome, Embryonic stem cells, ES Cell Differentiation/IPS, Transcription Factors

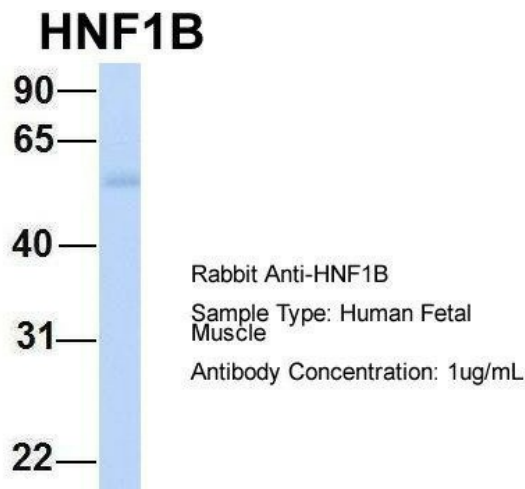
Protein Pathways:

Maturity onset diabetes of the young

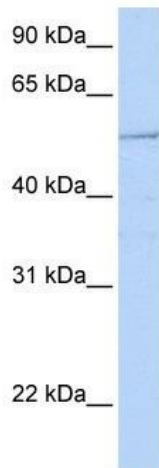
Product images:




Host: Rabbit; Target Name: HNF1B; Sample Tissue: Human Fetal Lung; Antibody Dilution: 1.0ug/ml



Host: Rabbit; Target Name: HNF1B; Sample Tissue: Human Fetal Muscle; Antibody Dilution: 1.0ug/ml



WB Suggested Anti-HNF1B Antibody Titration: 0.2-1 ug/ml; ELISA Titer: 1: 1562500; Positive Control: 721_B cell lysate HNF1B is strongly supported by BioGPS gene expression data to be expressed in Human 721_B cells