

Product datasheet for **TA332347**

OR52N5 Rabbit Polyclonal Antibody

Product data:

Product Type:	Primary Antibodies
Applications:	WB
Recommended Dilution:	WB
Reactivity:	Human
Host:	Rabbit
Isotype:	IgG
Clonality:	Polyclonal
Immunogen:	The immunogen for Anti-OR52N5 Antibody is: synthetic peptide directed towards the C-terminal region of Human OR52N5. Synthetic peptide located within the following region: GHTIPPSLHIIVANLYLLLPTLNPIVYGVKTKQIRKSVIKFFQGDKGAG
Formulation:	Liquid. Purified antibody supplied in 1x PBS buffer with 0.09% (w/v) sodium azide and 2% sucrose. <i>Note that this product is shipped as lyophilized powder to China customers.</i>
Conjugation:	Unconjugated
Storage:	Store at -20°C as received.
Stability:	Stable for 12 months from date of receipt.
Predicted Protein Size:	36 kDa
Gene Name:	olfactory receptor family 52 subfamily N member 5
Database Link:	NP_001001922 Entrez Gene 390075 Human Q8NH56
Background:	Olfactory receptors interact with odorant molecules in the nose, to initiate a neuronal response that triggers the perception of a smell. The olfactory receptor proteins are members of a large family of G-protein-coupled receptors (GPCR) arising from single coding-exon genes. Olfactory receptors share a 7-transmembrane domain structure with many neurotransmitter and hormone receptors and are responsible for the recognition and G protein-mediated transduction of odorant signals. The olfactory receptor gene family is the largest in the genome. The nomenclature assigned to the olfactory receptor genes and proteins for this organism is independent of other organisms.



[View online »](#)

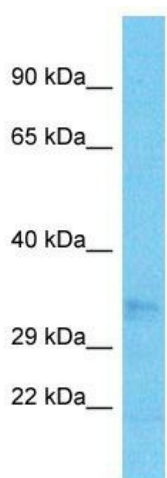
Synonyms: OR11-62; OR52N5Q

Note: Immunogen sequence homology: Human: 100%; Rabbit: 83%; Rat: 82%

Protein Families: Transmembrane

Protein Pathways: Olfactory transduction

Product images:



Host: Rabbit

Target Name: OR52N5

Sample Tissue: ACHN Cell Lysate

Antibody Dilution: 1.0µg/ml

Host: Rabbit; Target Name: OR52N5; Sample Tissue: ACHN Whole Cell lysates; Antibody Dilution: 1.0ug/ml