

Product datasheet for **TA332345**

OR10G9 Rabbit Polyclonal Antibody

Product data:

Product Type:	Primary Antibodies
Applications:	WB
Recommended Dilution:	WB
Reactivity:	Human
Host:	Rabbit
Isotype:	IgG
Clonality:	Polyclonal
Immunogen:	The immunogen for Anti-OR10G9 Antibody is: synthetic peptide directed towards the C-terminal region of Human OR10G9. Synthetic peptide located within the following region: IYLRPGSRDVVDGVVAIFYTVLTPLLNPWYTLRNKEVKKAVLKLRDKVA
Formulation:	Liquid. Purified antibody supplied in 1x PBS buffer with 0.09% (w/v) sodium azide and 2% sucrose.
Conjugation:	Unconjugated
Storage:	Store at -20°C as received.
Stability:	Stable for 12 months from date of receipt.
Predicted Protein Size:	34 kDa
Gene Name:	olfactory receptor family 10 subfamily G member 9
Database Link:	NP_001001953 Entrez Gene 219870 Human Q8NGN4
Background:	Olfactory receptors interact with odorant molecules in the nose, to initiate a neuronal response that triggers the perception of a smell. The olfactory receptor proteins are members of a large family of G-protein-coupled receptors (GPCR) arising from single coding-exon genes. Olfactory receptors share a 7-transmembrane domain structure with many neurotransmitter and hormone receptors and are responsible for the recognition and G protein-mediated transduction of odorant signals. The olfactory receptor gene family is the largest in the genome. The nomenclature assigned to the olfactory receptor genes and proteins for this organism is independent of other organisms.



[View online »](#)

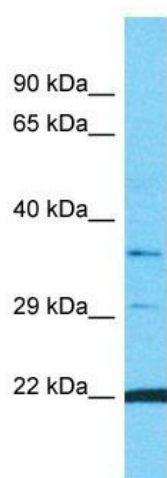
Synonyms: OR10G10P

Note: Immunogen sequence homology: Pig: 100%; Human: 100%; Rabbit: 100%; Guinea pig: 100%; Dog: 93%; Horse: 93%; Mouse: 93%; Bovine: 93%; Rat: 92%

Protein Families: Transmembrane

Protein Pathways: Olfactory transduction

Product images:



Host: Rabbit

Target Name: OR10G9

Sample Tissue: MCF7 Cell Lysate

Antibody Dilution: 1.0µg/ml

Host: Rabbit; Target Name: OR10G9; Sample Tissue: MCF7 Whole Cell lysates; Antibody Dilution: 1.0ug/ml