

Product datasheet for **TA332344**

ARL6IP4 Rabbit Polyclonal Antibody

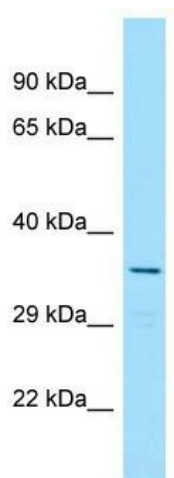
Product data:

Product Type:	Primary Antibodies
Applications:	WB
Recommended Dilution:	WB
Reactivity:	Human
Host:	Rabbit
Isotype:	IgG
Clonality:	Polyclonal
Immunogen:	The immunogen for Anti-ARL6IP4 Antibody is: synthetic peptide directed towards the middle region of Human ARL6IP4. Synthetic peptide located within the following region: SRSRGRGSEKRKKKSRKDTSRNCSTASTSQERSKQKARRRTRSSSSSSSS
Formulation:	Liquid. Purified antibody supplied in 1x PBS buffer with 0.09% (w/v) sodium azide and 2% sucrose. <i>Note that this product is shipped as lyophilized powder to China customers.</i>
Conjugation:	Unconjugated
Storage:	Store at -20°C as received.
Stability:	Stable for 12 months from date of receipt.
Predicted Protein Size:	37 kDa
Gene Name:	ADP ribosylation factor like GTPase 6 interacting protein 4
Database Link:	NP_001002252 Entrez Gene 51329 Human Q66PJ3
Background:	In case of infection by Herpes simplex virus (HSV1), ARL6IP4 may act as a splicing inhibitor of HSV1 pre-mRNA.
Synonyms:	SFRS20; SR-25; SRp25; SRp37
Note:	Immunogen sequence homology: Human: 100%; Dog: 85%; Horse: 85%; Pig: 77%; Bovine: 77%



[View online »](#)

Product images:



WB Suggested Anti-ARL6IP4 Antibody; Titration: 1.0 ug/ml; Positive Control: Hela Whole cellARL6IP4 is supported by BioGPS gene expression data to be expressed in HeLa