

## Product datasheet for **TA332341**

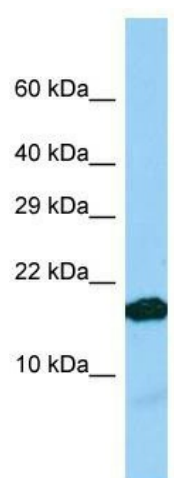
### IGFL2 Rabbit Polyclonal Antibody

#### Product data:

Product Type:	Primary Antibodies
Applications:	WB
Recommended Dilution:	WB
Reactivity:	Human
Host:	Rabbit
Isotype:	IgG
Clonality:	Polyclonal
Immunogen:	The immunogen for Anti-IGFL2 Antibody is: synthetic peptide directed towards the C-terminal region of Human IGFL2. Synthetic peptide located within the following region: QCGPPCTFWPCFELCCLDSFGLTNDFFVVKLVQGVNSQCHSSPISSKCES
Formulation:	Liquid. Purified antibody supplied in 1x PBS buffer with 0.09% (w/v) sodium azide and 2% sucrose. <i>Note that this product is shipped as lyophilized powder to China customers.</i>
Conjugation:	Unconjugated
Storage:	Store at -20°C as received.
Stability:	Stable for 12 months from date of receipt.
Predicted Protein Size:	14 kDa
Gene Name:	IGF like family member 2
Database Link:	<a href="#">NP_001002915</a> <a href="#">Entrez Gene 147920 Human</a> <a href="#">Q6UWQ7</a>
Background:	IGFL2 belongs to the insulin-like growth factor family of signaling molecules that play critical roles in cellular energy metabolism and in growth and development, especially prenatal growth.
Synonyms:	UNQ645; VPRI645
Note:	Immunogen sequence homology: Human: 100%; Rabbit: 92%
Protein Families:	Secreted Protein



[View online »](#)

**Product images:**

Host: Rabbit; Target Name: IGFL2; Sample Tissue: Jurkat Whole Cell lysates; Antibody Dilution: 1.0ug/ml