

Product datasheet for **TA332337**

OR10A3 Rabbit Polyclonal Antibody

Product data:

Product Type:	Primary Antibodies
Applications:	WB
Recommended Dilution:	WB
Reactivity:	Human
Host:	Rabbit
Isotype:	IgG
Clonality:	Polyclonal
Immunogen:	The immunogen for Anti-OR10A3 Antibody is: synthetic peptide directed towards the C-terminal region of Human OR10A3. Synthetic peptide located within the following region: YGTANMTYLQPKSGYSPETKKLISLAYTLLPLLNPLIYSLRNSEMKRTL
Formulation:	Liquid. Purified antibody supplied in 1x PBS buffer with 0.09% (w/v) sodium azide and 2% sucrose. <i>Note that this product is shipped as lyophilized powder to China customers.</i>
Conjugation:	Unconjugated
Storage:	Store at -20°C as received.
Stability:	Stable for 12 months from date of receipt.
Predicted Protein Size:	35 kDa
Gene Name:	olfactory receptor family 10 subfamily A member 3
Database Link:	NP_001003745 Entrez Gene 26496 Human P58181
Background:	Olfactory receptors interact with odorant molecules in the nose, to initiate a neuronal response that triggers the perception of a smell. The olfactory receptor proteins are members of a large family of G-protein-coupled receptors (GPCR) arising from single coding-exon genes. Olfactory receptors share a 7-transmembrane domain structure with many neurotransmitter and hormone receptors and are responsible for the recognition and G protein-mediated transduction of odorant signals. The olfactory receptor gene family is the largest in the genome. The nomenclature assigned to the olfactory receptor genes and proteins for this organism is independent of other organisms.



[View online »](#)

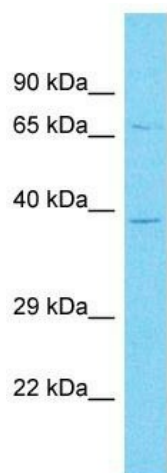
Synonyms: HSHTPCR12; HTPCR12

Note: Immunogen sequence homology: Human: 100%; Dog: 93%; Bovine: 93%; Pig: 86%; Horse: 86%; Mouse: 86%; Rabbit: 86%; Rat: 79%

Protein Families: Transmembrane

Protein Pathways: Olfactory transduction

Product images:



Host: Rabbit

Target Name: OR10A3

Sample Tissue: HeLa Cell Lysate

Antibody Dilution: 1.0 μ g/ml

Host: Rabbit; Target Name: OR10A3; Sample Tissue: HeLa Whole Cell lysates; Antibody Dilution: 1.0 μ g/ml