

## Product datasheet for TA332335

### DMAC2L Rabbit Polyclonal Antibody

#### Product data:

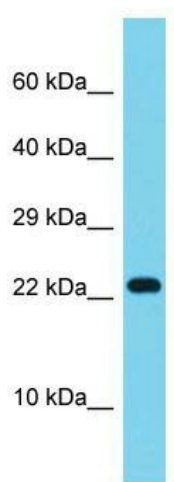
Product Type:	Primary Antibodies
Applications:	WB
Recommended Dilution:	WB
Reactivity:	Human
Host:	Rabbit
Isotype:	IgG
Clonality:	Polyclonal
Immunogen:	The immunogen for Anti-ATP5S Antibody is: synthetic peptide directed towards the N-terminal region of Human ATP5S. Synthetic peptide located within the following region: LRCGAMVRYHGGQERWQKDYNHLPTGPLDKYKIQAIDATDSCIMSIGFDHM
Formulation:	Liquid. Purified antibody supplied in 1x PBS buffer with 0.09% (w/v) sodium azide and 2% sucrose.
Conjugation:	Unconjugated
Storage:	Store at -20°C as received.
Stability:	Stable for 12 months from date of receipt.
Predicted Protein Size:	24 kDa
Gene Name:	ATP synthase, H <sup>+</sup> transporting, mitochondrial Fo complex subunit s (factor B)
Database Link:	<a href="#">NP_001003805</a> <a href="#">Entrez Gene 27109 Human</a> <a href="#">Q99766</a>
Background:	This gene encodes a subunit of mitochondrial ATP synthase. Mitochondrial ATP synthase catalyzes ATP synthesis, utilizing an electrochemical gradient of protons across the inner membrane during oxidative phosphorylation. ATP synthase is composed of two linked multi-subunit complexes: the soluble catalytic core, F1, and the membrane-spanning component, Fo, comprising the proton channel. This gene encodes the subunit s, also known as factor B, of the proton channel. This subunit is necessary for the energy transduction activity of the ATP synthase complexes. Alternatively spliced transcript variants encoding different isoforms have been identified.


[View online »](#)

**Synonyms:** ATPW; FB; HSU79253

**Note:** Immunogen sequence homology: Dog: 100%; Pig: 100%; Human: 100%; Rabbit: 100%; Guinea pig: 100%; Rat: 93%; Horse: 93%; Bovine: 93%

**Product images:**



Host: Rabbit; Target Name: ATP5S; Sample  
Tissue: ACHN Whole cell lysates; Antibody  
Dilution: 1.0ug/ml