

## Product datasheet for **TA332331**

### C10orf90 Rabbit Polyclonal Antibody

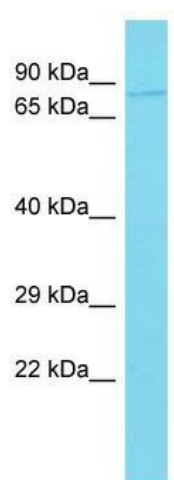
#### Product data:

Product Type:	Primary Antibodies
Applications:	WB
Recommended Dilution:	WB
Reactivity:	Human
Host:	Rabbit
Isotype:	IgG
Clonality:	Polyclonal
Immunogen:	The immunogen for Anti-C10orf90 Antibody is: synthetic peptide directed towards the C-terminal region of Human C10orf90. Synthetic peptide located within the following region: QDVCASLQEDNGVQIESKFKPGDYTCDDL VVKIKECKKSEDPTTPEPSA
Formulation:	Liquid. Purified antibody supplied in 1x PBS buffer with 0.09% (w/v) sodium azide and 2% sucrose. <i>Note that this product is shipped as lyophilized powder to China customers.</i>
Conjugation:	Unconjugated
Storage:	Store at -20°C as received.
Stability:	Stable for 12 months from date of receipt.
Predicted Protein Size:	77 kDa
Gene Name:	chromosome 10 open reading frame 90
Database Link:	<a href="#">NP_001004298</a> <a href="#">Entrez Gene 118611 Human</a> <a href="#">Q96M02</a>
Background:	C10orf90 is a tumor suppressor that is required to sustain G2/M checkpoint after DNA damage. It mediates CDKN1A/p21 protein stability in a ubiquitin-independent manner. It may have a role in the assembly of primary cilia.
Synonyms:	bA422P15.2; FATS
Note:	Immunogen sequence homology: Human: 100%; Rat: 86%; Pig: 85%; Guinea pig: 85%; Mouse: 79%



[View online »](#)

## Product images:



Host: Rabbit; Target Name: C10orf90; Sample  
Tissue: 721\_B Whole Cell lysates; Antibody  
Dilution: 1.0ug/ml