

Product datasheet for **TA332326**

OR10A2 Rabbit Polyclonal Antibody

Product data:

Product Type:	Primary Antibodies
Applications:	WB
Recommended Dilution:	WB
Reactivity:	Human
Host:	Rabbit
Isotype:	IgG
Clonality:	Polyclonal
Immunogen:	The immunogen for Anti-OR10A2 Antibody is: synthetic peptide directed towards the C-terminal region of Human OR10A2. Synthetic peptide located within the following region: SHLLVSLFYISLSLTYFRPKSNNSPEGKLLSLSYVMTPLNPIIYSL
Formulation:	Liquid. Purified antibody supplied in 1x PBS buffer with 0.09% (w/v) sodium azide and 2% sucrose. <i>Note that this product is shipped as lyophilized powder to China customers.</i>
Conjugation:	Unconjugated
Storage:	Store at -20°C as received.
Stability:	Stable for 12 months from date of receipt.
Predicted Protein Size:	34 kDa
Gene Name:	olfactory receptor family 10 subfamily A member 2
Database Link:	NP_001004460 Entrez Gene 341276 Human Q9H208
Background:	Olfactory receptors interact with odorant molecules in the nose, to initiate a neuronal response that triggers the perception of a smell. The olfactory receptor proteins are members of a large family of G-protein-coupled receptors (GPCR) arising from single coding-exon genes. Olfactory receptors share a 7-transmembrane domain structure with many neurotransmitter and hormone receptors and are responsible for the recognition and G protein-mediated transduction of odorant signals. The olfactory receptor gene family is the largest in the genome. The nomenclature assigned to the olfactory receptor genes and proteins for this organism is independent of other organisms.



[View online »](#)

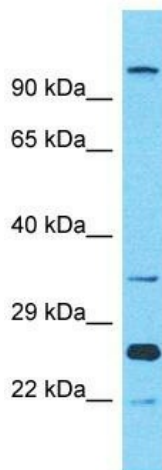
Synonyms: OR10A2P; OR11-82; OR11-86; OST363

Note: Immunogen sequence homology: Rat: 100%; Human: 100%; Dog: 93%; Pig: 93%; Horse: 93%; Mouse: 93%; Bovine: 93%; Rabbit: 93%; Guinea pig: 93%

Protein Families: Druggable Genome, Transmembrane

Protein Pathways: Olfactory transduction

Product images:



Host: Rabbit

Target Name: OR10A2

Sample Tissue: THP-1 Cell Lysate

Antibody Dilution: 1.0µg/ml

Host: Rabbit; Target Name: OR10A2; Sample Tissue: THP-1 Whole Cell lysates; Antibody Dilution: 1.0ug/ml