

Product datasheet for **TA332318**

OR10K2 Rabbit Polyclonal Antibody

Product data:

| | |
|-------------------------|---|
| Product Type: | Primary Antibodies |
| Applications: | WB |
| Recommended Dilution: | WB |
| Reactivity: | Human |
| Host: | Rabbit |
| Isotype: | IgG |
| Clonality: | Polyclonal |
| Immunogen: | The immunogen for Anti-OR10K2 Antibody is: synthetic peptide directed towards the C-terminal region of Human OR10K2. Synthetic peptide located within the following region: VSHLIIVTVHYGCASFIYLRPQSNYSSSQDALISVSYTIITPLFNPMIYS |
| Formulation: | Liquid. Purified antibody supplied in 1x PBS buffer with 0.09% (w/v) sodium azide and 2% sucrose. <i>Note that this product is shipped as lyophilized powder to China customers.</i> |
| Conjugation: | Unconjugated |
| Storage: | Store at -20°C as received. |
| Stability: | Stable for 12 months from date of receipt. |
| Predicted Protein Size: | 34 kDa |
| Gene Name: | olfactory receptor family 10 subfamily K member 2 |
| Database Link: | NP_001004476 Entrez Gene 391107 Human Q6IF99 |
| Background: | Olfactory receptors interact with odorant molecules in the nose, to initiate a neuronal response that triggers the perception of a smell. The olfactory receptor proteins are members of a large family of G-protein-coupled receptors (GPCR) arising from single coding-exon genes. Olfactory receptors share a 7-transmembrane domain structure with many neurotransmitter and hormone receptors and are responsible for the recognition and G protein-mediated transduction of odorant signals. The olfactory receptor gene family is the largest in the genome. The nomenclature assigned to the olfactory receptor genes and proteins for this organism is independent of other organisms. |



[View online »](#)

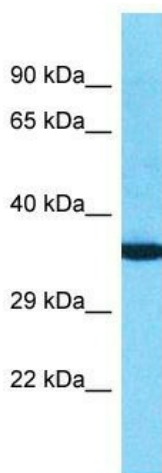
Synonyms: OR1-4

Note: Immunogen sequence homology: Human: 100%; Bovine: 100%; Rat: 93%; Dog: 91%; Pig: 86%; Horse: 86%; Mouse: 86%; Rabbit: 86%; Guinea pig: 86%

Protein Families: Transmembrane

Protein Pathways: Olfactory transduction

Product images:



Host: Rabbit
Target Name: OR10K2
Sample Tissue: Fetal Kidney Lysate
Antibody Dilution: 1.0 μ g/ml

Host: Rabbit; Target Name: OR10K2; Sample Tissue: Fetal Kidney lysates; Antibody Dilution: 1.0 μ g/ml