

Product datasheet for **TA332316**

OR13J1 Rabbit Polyclonal Antibody

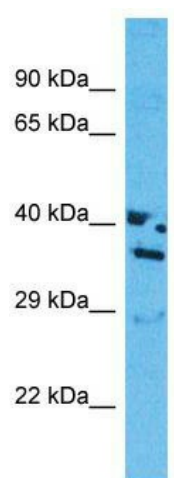
Product data:

Product Type:	Primary Antibodies
Applications:	WB
Recommended Dilution:	WB
Reactivity:	Human
Host:	Rabbit
Isotype:	IgG
Clonality:	Polyclonal
Immunogen:	The immunogen for Anti-OR13J1 Antibody is: synthetic peptide directed towards the C-terminal region of Human OR13J1. Synthetic peptide located within the following region: ILRVPSAARCKAFSTCLAHLAVLLFYGTIIFMYLKPKSKEAHISDEVF
Formulation:	Liquid. Purified antibody supplied in 1x PBS buffer with 0.09% (w/v) sodium azide and 2% sucrose. <i>Note that this product is shipped as lyophilized powder to China customers.</i>
Conjugation:	Unconjugated
Storage:	Store at -20°C as received.
Stability:	Stable for 12 months from date of receipt.
Predicted Protein Size:	34 kDa
Gene Name:	olfactory receptor family 13 subfamily J member 1
Database Link:	NP_001004487 Entrez Gene 392309 Human Q8NGT2
Background:	OR13J1 is a potential odorant receptor.
Synonyms:	OR9-2
Note:	Immunogen sequence homology: Human: 100%; Dog: 93%; Pig: 93%; Bovine: 93%; Guinea pig: 93%; Rat: 86%; Mouse: 79%; Rabbit: 79%
Protein Families:	Transmembrane
Protein Pathways:	Olfactory transduction



[View online »](#)

Product images:



Host: Rabbit; Target Name: OR13J1; Sample
Tissue: MCF7 Whole cell lysates; Antibody
Dilution: 1.0ug/ml