

Product datasheet for **TA332298**

OR52I2 Rabbit Polyclonal Antibody

Product data:

Product Type:	Primary Antibodies
Applications:	WB
Recommended Dilution:	WB
Reactivity:	Human
Host:	Rabbit
Isotype:	IgG
Clonality:	Polyclonal
Immunogen:	The immunogen for Anti-OR52I2 Antibody is: synthetic peptide directed towards the N-terminal region of Human OR52I2. Synthetic peptide located within the following region: SSVVPMVSIFCSGDSSISFSACFTQMFFVHLATAVETGLLLTMAFDRYV
Formulation:	Liquid. Purified antibody supplied in 1x PBS buffer with 0.09% (w/v) sodium azide and 2% sucrose. <i>Note that this product is shipped as lyophilized powder to China customers.</i>
Conjugation:	Unconjugated
Storage:	Store at -20°C as received.
Stability:	Stable for 12 months from date of receipt.
Predicted Protein Size:	38 kDa
Gene Name:	olfactory receptor family 52 subfamily I member 2
Database Link:	NP_001005170 Entrez Gene 143502 Human Q8NH67
Background:	Olfactory receptors interact with odorant molecules in the nose, to initiate a neuronal response that triggers the perception of a smell. The olfactory receptor proteins are members of a large family of G-protein-coupled receptors (GPCR) arising from single coding-exon genes. Olfactory receptors share a 7-transmembrane domain structure with many neurotransmitter and hormone receptors and are responsible for the recognition and G protein-mediated transduction of odorant signals. The olfactory receptor gene family is the largest in the genome. The nomenclature assigned to the olfactory receptor genes and proteins for this organism is independent of other organisms.



[View online »](#)

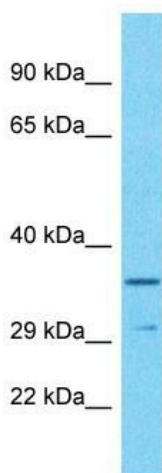
Synonyms: OR11-12; OR52I1

Note: Immunogen sequence homology: Human: 100%; Rabbit: 93%; Rat: 92%; Horse: 86%; Mouse: 86%; Bovine: 79%; Pig: 77%; Guinea pig: 77%

Protein Families: GPCR, Transmembrane

Protein Pathways: Olfactory transduction

Product images:



Host: Rabbit
Target Name: OR52I2
Sample Tissue: HT1080 Cell Lysate
Antibody Dilution: 1.0µg/ml

Host: Rabbit; Target Name: OR52I2; Sample Tissue: HT1080 Whole Cell lysates; Antibody Dilution: 1.0ug/ml