

## Product datasheet for **TA332294**

### OR6Q1 Rabbit Polyclonal Antibody

#### Product data:

Product Type:	Primary Antibodies
Applications:	WB
Recommended Dilution:	WB
Reactivity:	Human
Host:	Rabbit
Isotype:	IgG
Clonality:	Polyclonal
Immunogen:	The immunogen for Anti-OR6Q1 Antibody is: synthetic peptide directed towards the C-terminal region of Human OR6Q1. Synthetic peptide located within the following region: FMYVQTKVTSSINFNKVSVFYSVTPMLNPLIYSLRNKEVKGALGRVFS
Formulation:	Liquid. Purified antibody supplied in 1x PBS buffer with 0.09% (w/v) sodium azide and 2% sucrose. <i>Note that this product is shipped as lyophilized powder to China customers.</i>
Conjugation:	Unconjugated
Storage:	Store at -20°C as received.
Stability:	Stable for 12 months from date of receipt.
Predicted Protein Size:	34 kDa
Gene Name:	olfactory receptor family 6 subfamily Q member 1 (gene/pseudogene)
Database Link:	<a href="#">NP_001005186</a> <a href="#">Entrez Gene 219952 Human</a> <a href="#">Q8NGQ2</a>
Background:	Olfactory receptors interact with odorant molecules in the nose, to initiate a neuronal response that triggers the perception of a smell. The olfactory receptor proteins are members of a large family of G-protein-coupled receptors (GPCR) arising from single coding-exon genes. Olfactory receptors share a 7-transmembrane domain structure with many neurotransmitter and hormone receptors and are responsible for the recognition and G protein-mediated transduction of odorant signals. The olfactory receptor gene family is the largest in the genome. The nomenclature assigned to the olfactory receptor genes and proteins for this organism is independent of other organisms.



[View online »](#)

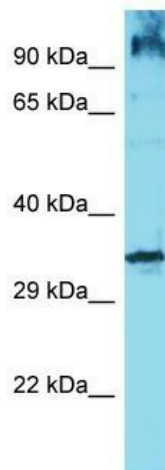
**Synonyms:** OR11-226

**Note:** Immunogen sequence homology: Dog: 100%; Pig: 100%; Rat: 100%; Horse: 100%; Human: 100%; Mouse: 100%; Bovine: 100%; Guinea pig: 100%; Rabbit: 91%

**Protein Families:** Transmembrane

**Protein Pathways:** Olfactory transduction

### Product images:



Host: Rabbit

Target Name: OR6Q1

Sample Tissue: Jurkat Cell Lysate

Antibody Dilution: 1.0µg/ml

Host: Rabbit; Target Name: OR6Q1; Sample Tissue: Jurkat Whole Cell lysates; Antibody Dilution: 1.0ug/ml