

Product datasheet for **TA332289**

OR911 Rabbit Polyclonal Antibody

Product data:

| | |
|-------------------------|---|
| Product Type: | Primary Antibodies |
| Applications: | WB |
| Recommended Dilution: | WB |
| Reactivity: | Human |
| Host: | Rabbit |
| Isotype: | IgG |
| Clonality: | Polyclonal |
| Immunogen: | The immunogen for Anti-OR911 Antibody is: synthetic peptide directed towards the C-terminal region of Human OR911. Synthetic peptide located within the following region: VKSSGGRAKTFSTCASHITAVALFFGALIFMYLQSGSGKSLEEDKVVSVF |
| Formulation: | Liquid. Purified antibody supplied in 1x PBS buffer with 0.09% (w/v) sodium azide and 2% sucrose. <i>Note that this product is shipped as lyophilized powder to China customers.</i> |
| Conjugation: | Unconjugated |
| Storage: | Store at -20°C as received. |
| Stability: | Stable for 12 months from date of receipt. |
| Predicted Protein Size: | 34 kDa |
| Gene Name: | olfactory receptor family 9 subfamily I member 1 |
| Database Link: | NP_001005211 Entrez Gene 219954 Human Q8NGQ6 |
| Background: | Olfactory receptors interact with odorant molecules in the nose, to initiate a neuronal response that triggers the perception of a smell. The olfactory receptor proteins are members of a large family of G-protein-coupled receptors (GPCR) arising from single coding-exon genes. Olfactory receptors share a 7-transmembrane domain structure with many neurotransmitter and hormone receptors and are responsible for the recognition and G protein-mediated transduction of odorant signals. The olfactory receptor gene family is the largest in the genome. The nomenclature assigned to the olfactory receptor genes and proteins for this organism is independent of other organisms. |



[View online »](#)

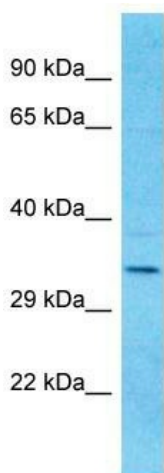
Synonyms: OR11-228

Note: Immunogen sequence homology: Horse: 100%; Human: 100%; Rabbit: 100%; Rat: 92%; Mouse: 92%; Pig: 83%; Guinea pig: 83%; Dog: 79%

Protein Families: Transmembrane

Protein Pathways: Olfactory transduction

Product images:



Host: Rabbit
Target Name: OR911
Sample Tissue: Fetal Kidney Lysate
Antibody Dilution: 1.0 μ g/ml

Host: Rabbit; Target Name: OR911; Sample Tissue: Fetal Kidney lysates; Antibody Dilution: 1.0 μ g/ml