

## Product datasheet for **TA332282**

### PLCXD3 Rabbit Polyclonal Antibody

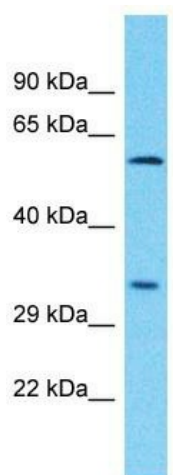
#### Product data:

Product Type:	Primary Antibodies
Applications:	WB
Recommended Dilution:	WB
Reactivity:	Human
Host:	Rabbit
Isotype:	IgG
Clonality:	Polyclonal
Immunogen:	The immunogen for Anti-PLCXD3 Antibody is: synthetic peptide directed towards the C-terminal region of Human PLCXD3. Synthetic peptide located within the following region: KASTVVKGVASGLRETITERALPAMMQWVRTQKPGESGINIVTADFVELG
Formulation:	Liquid. Purified antibody supplied in 1x PBS buffer with 0.09% (w/v) sodium azide and 2% sucrose. <i>Note that this product is shipped as lyophilized powder to China customers.</i>
Conjugation:	Unconjugated
Storage:	Store at -20°C as received.
Stability:	Stable for 12 months from date of receipt.
Predicted Protein Size:	36 kDa
Gene Name:	phosphatidylinositol specific phospholipase C X domain containing 3
Database Link:	<a href="#">NP_001005473</a> <a href="#">Entrez Gene 345557 Human</a> <a href="#">Q63HM9</a>
Background:	The function of this protein remains unknown.
Synonyms:	phosphatidylinositol-specific phospholipase C; X domain containing 3
Note:	Immunogen sequence homology: Dog: 100%; Pig: 100%; Rat: 100%; Human: 100%; Mouse: 100%; Bovine: 100%; Rabbit: 100%; Guinea pig: 100%



[View online »](#)

## Product images:



Host: Rabbit  
Target Name: PLCXD3  
Sample Tissue: Jurkat Cell Lysate  
Antibody Dilution: 1.0 $\mu$ g/ml

Host: Rabbit; Target Name: PLCXD3; Sample  
Tissue: Jurkat Whole Cell lysates; Antibody  
Dilution: 1.0 $\mu$ g/ml