

Product datasheet for **TA332281**

Lmtk3 Rabbit Polyclonal Antibody

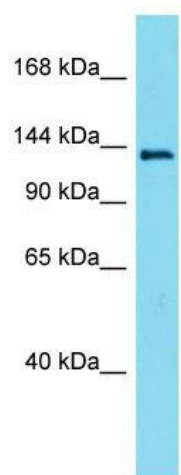
Product data:

Product Type:	Primary Antibodies
Applications:	WB
Recommended Dilution:	WB
Reactivity:	Mouse
Host:	Rabbit
Isotype:	IgG
Clonality:	Polyclonal
Immunogen:	The immunogen for Anti-Lmtk3 Antibody is: synthetic peptide directed towards the middle region of Mouse Lmtk3. Synthetic peptide located within the following region: RGLLKSPRAADEPEDSELERKRKMVSFHGDVTVYLFQETPTNELSVQGT
Formulation:	Liquid. Purified antibody supplied in 1x PBS buffer with 0.09% (w/v) sodium azide and 2% sucrose. <i>Note that this product is shipped as lyophilized powder to China customers.</i>
Conjugation:	Unconjugated
Storage:	Store at -20°C as received.
Stability:	Stable for 12 months from date of receipt.
Predicted Protein Size:	151 kDa
Gene Name:	lemur tyrosine kinase 3
Database Link:	NP_001005511 Entrez Gene 381983 Mouse Q5XJV6
Background:	The function of this protein remains unknown.
Synonyms:	KIAA1883; LMR3; TYKLM3
Note:	Immunogen sequence homology: Pig: 100%; Human: 100%; Bovine: 100%; Mouse: 93%; Guinea pig: 93%



[View online »](#)

Product images:



Host: Rabbit; Target Name: Lmtk3; Sample
Tissue: Mouse Pancreas lysates; Antibody
Dilution: 1.0ug/ml