

Product datasheet for **TA332278**

STEAP3 Rabbit Polyclonal Antibody

Product data:

Product Type:	Primary Antibodies
Applications:	WB
Recommended Dilution:	WB
Reactivity:	Human
Host:	Rabbit
Isotype:	IgG
Clonality:	Polyclonal
Immunogen:	The immunogen for Anti-STEAP3 Antibody: synthetic peptide directed towards the N terminal of human STEAP3. Synthetic peptide located within the following region: LVGSGFKVWVGSRNPKRTARLFPSAAQVTFQEEAVSSPEVIFVAVFREHY
Formulation:	Liquid. Purified antibody supplied in 1x PBS buffer with 0.09% (w/v) sodium azide and 2% sucrose. <i>Note that this product is shipped as lyophilized powder to China customers.</i>
Conjugation:	Unconjugated
Storage:	Store at -20°C as received.
Stability:	Stable for 12 months from date of receipt.
Predicted Protein Size:	54 kDa
Gene Name:	STEAP3 metalloredutase
Database Link:	NP_001008410 Entrez Gene 55240 Human Q658P3
Background:	AS an endosomal ferrireductase, STEAP3 is required for efficient transferrin-dependent iron uptake in erythroid cells. It participates in erythroid iron homeostasis by reducing Fe(3+) to Fe(2+) and can also reduce of Cu(2+) to Cu(1+), suggesting that it participates in copper homeostasis. STEAP3 uses NAD(+) as acceptor (By similarity). It may play a role downstream of p53/TP53 to interface apoptosis and cell cycle progression. STEAP3 is indirectly involved in exosome secretion by facilitating the secretion of proteins such as TCT
Synonyms:	AHMIO2; dudlin-2; dudulin-2; pHyde; STMP3; TSAP6



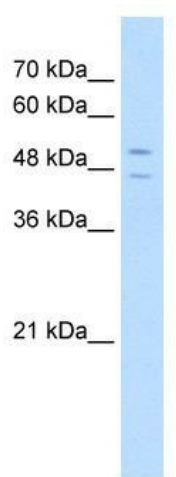
[View online »](#)

Note: Immunogen sequence homology: Rat: 100%; Human: 100%; Mouse: 100%; Horse: 93%; Rabbit: 93%; Pig: 92%; Bovine: 86%; Guinea pig: 86%; Dog: 79%

Protein Families: Transmembrane

Protein Pathways: p53 signaling pathway

Product images:



WB Suggested Anti-STEAP3 Antibody Titration:
5.0ug/ml; Positive Control: HepG2 cell lysate