

Product datasheet for **TA332275**

Krt35 Rabbit Polyclonal Antibody

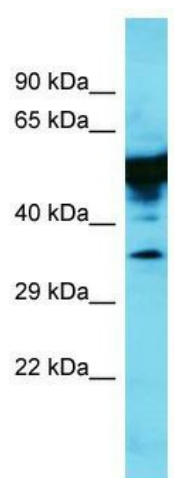
Product data:

Product Type:	Primary Antibodies
Applications:	WB
Recommended Dilution:	WB
Reactivity:	Rat
Host:	Rabbit
Isotype:	IgG
Clonality:	Polyclonal
Immunogen:	The immunogen for Anti-Krt35 Antibody is: synthetic peptide directed towards the middle region of Rat Krt35. Synthetic peptide located within the following region: NGLRRILDDLTLCADLEAQVESLKEELLCLKKNHEEEVNSLRCQLGDRL
Formulation:	Liquid. Purified antibody supplied in 1x PBS buffer with 0.09% (w/v) sodium azide and 2% sucrose.
Conjugation:	Unconjugated
Storage:	Store at -20°C as received.
Stability:	Stable for 12 months from date of receipt.
Predicted Protein Size:	51 kDa
Gene Name:	keratin 35
Database Link:	NP_001008820 Entrez Gene 287697 Rat
Background:	The function of this protein remains unknown.
Synonyms:	Ha-5; HA5; hHa5; HKA5; K35; Keratin-35; KRTHA5
Note:	Immunogen sequence homology: Pig: 100%; Human: 100%; Sheep: 100%; Bovine: 100%; Dog: 92%; Rat: 92%; Horse: 92%; Mouse: 92%; Rabbit: 92%; Goat: 83%; Guinea pig: 79%



[View online »](#)

Product images:



Host: Rabbit; Target Name: Krt35; Sample Tissue: Rat Lung lysates; Antibody Dilution: 1.0ug/ml