

Product datasheet for **TA332273**

ACSM2A Rabbit Polyclonal Antibody

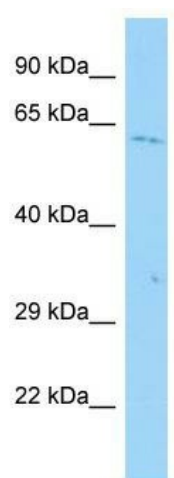
Product data:

Product Type:	Primary Antibodies
Applications:	WB
Recommended Dilution:	WB
Reactivity:	Human
Host:	Rabbit
Isotype:	IgG
Clonality:	Polyclonal
Immunogen:	The immunogen for Anti-ACSM2A Antibody is: synthetic peptide directed towards the C-terminal region of Human ACSM2A. Synthetic peptide located within the following region: SYKFPHLQNCVTVGESLLPETLENWRAQTGLDIRESYGQTETGLTCMVSK
Formulation:	Liquid. Purified antibody supplied in 1x PBS buffer with 0.09% (w/v) sodium azide and 2% sucrose. <i>Note that this product is shipped as lyophilized powder to China customers.</i>
Conjugation:	Unconjugated
Storage:	Store at -20°C as received.
Stability:	Stable for 12 months from date of receipt.
Predicted Protein Size:	64 kDa
Gene Name:	acyl-CoA synthetase medium-chain family member 2A
Database Link:	NP_001010845 Entrez Gene 123876 Human Q08AH3
Background:	ACSM2A has medium-chain fatty acid:CoA ligase activity with broad substrate specificity (in vitro). It acts on acids from C4 to C(11) and on the corresponding 3-hydroxy- and 2,3- or 3,4-unsaturated acids (in vitro).
Synonyms:	A-923A4.1; ACSM2
Note:	Immunogen sequence homology: Human: 100%; Dog: 93%; Rabbit: 93%; Rat: 90%; Pig: 86%; Mouse: 86%; Guinea pig: 86%; Horse: 85%; Bovine: 85%; Zebrafish: 85%
Protein Pathways:	Butanoate metabolism, Metabolic pathways



[View online »](#)

Product images:



Host: Rabbit; Target Name: ACSM2A; Sample
Tissue: ACHN Whole cell lysates; Antibody
Dilution: 1.0ug/ml