

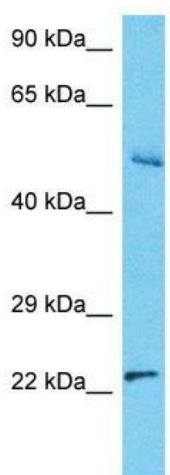
## Product datasheet for TA332271

### RNF187 Rabbit Polyclonal Antibody

#### Product data:

Product Type:	Primary Antibodies
Applications:	WB
Recommended Dilution:	WB
Reactivity:	Human
Host:	Rabbit
Isotype:	IgG
Clonality:	Polyclonal
Immunogen:	The immunogen for Anti-RNF187 Antibody is: synthetic peptide directed towards the C-terminal region of Human RNF187. Synthetic peptide located within the following region: ESAAAVWKGHVMDRRKKALTDYKKLRAFFVEEEEHFLQAEKEEGLPEDE
Formulation:	Liquid. Purified antibody supplied in 1x PBS buffer with 0.09% (w/v) sodium azide and 2% sucrose.
Conjugation:	Unconjugated
Storage:	Store at -20°C as received.
Stability:	Stable for 12 months from date of receipt.
Predicted Protein Size:	25 kDa
Gene Name:	ring finger protein 187
Database Link:	<a href="#">NP_001010858</a> <a href="#">Entrez Gene 149603 Human</a> <a href="#">Q5TA31</a>
Background:	E3 ubiquitin-protein ligase that acts as a coactivator of JUN-mediated gene activation in response to growth factor signaling via the MAP3K1 pathway, independently from MAPK8.
Synonyms:	RACO-1; RACO1
Note:	Immunogen sequence homology: Human: 100%; Horse: 87%; Bovine: 87%; Rabbit: 86%; Rat: 79%


[View online »](#)

**Product images:**


Host: Rabbit  
 Target Name: RNF187  
 Sample Tissue: HepG2 Cell Lysate  
 Antibody Dilution: 1.0µg/ml

Host: Rabbit; Target Name: RNF187; Sample  
 Tissue: HepG2 Whole Cell lysates; Antibody  
 Dilution: 1.0ug/ml