

Product datasheet for **TA332270**

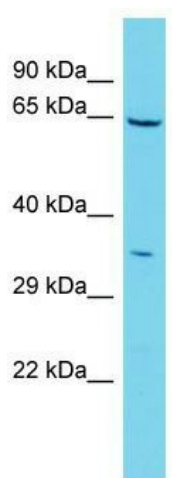
C1orf69 (IBA57) Rabbit Polyclonal Antibody

Product data:

| | |
|--------------------------------|--|
| Product Type: | Primary Antibodies |
| Applications: | WB |
| Recommended Dilution: | WB |
| Reactivity: | Human |
| Host: | Rabbit |
| Isotype: | IgG |
| Clonality: | Polyclonal |
| Immunogen: | The immunogen for Anti-IBA57 Antibody is: synthetic peptide directed towards the N-terminal region of Human IBA57. Synthetic peptide located within the following region: ILYGLQEHSEVSGFLLCDSSVQGALQKHLALYRIRRKVTVEPHPELRVW |
| Formulation: | Liquid. Purified antibody supplied in 1x PBS buffer with 0.09% (w/v) sodium azide and 2% sucrose. <i>Note that this product is shipped as lyophilized powder to China customers.</i> |
| Conjugation: | Unconjugated |
| Storage: | Store at -20°C as received. |
| Stability: | Stable for 12 months from date of receipt. |
| Predicted Protein Size: | 39 kDa |
| Gene Name: | IBA57 homolog, iron-sulfur cluster assembly |
| Database Link: | NP_001010867 Entrez Gene 200205 Human Q5T440 |
| Background: | IBA57 is required for normal heme biosynthesis. |
| Synonyms: | C1orf69; MMDS3; SPG74 |
| Note: | Immunogen sequence homology: Human: 100%; Mouse: 93%; Dog: 79%; Pig: 79%; Rat: 79%; Bovine: 79% |



[View online »](#)

Product images:

Host: Rabbit; Target Name: IBA57; Sample Tissue: 721_B Whole Cell lysates; Antibody Dilution: 1.0ug/ml