

## Product datasheet for **TA332269**

### RSPH4A Rabbit Polyclonal Antibody

#### Product data:

Product Type:	Primary Antibodies
Applications:	WB
Recommended Dilution:	WB
Reactivity:	Human
Host:	Rabbit
Isotype:	IgG
Clonality:	Polyclonal
Immunogen:	The immunogen for Anti-RSPH4A Antibody is: synthetic peptide directed towards the N-terminal region of Human RSPH4A. Synthetic peptide located within the following region: APPQSDRTTSVIPEAGTPYDPLEQSSDKRESTPHHTSQSEGNTFQQSQQ
Formulation:	Liquid. Purified antibody supplied in 1x PBS buffer with 0.09% (w/v) sodium azide and 2% sucrose. <i>Note that this product is shipped as lyophilized powder to China customers.</i>
Conjugation:	Unconjugated
Storage:	Store at -20°C as received.
Stability:	Stable for 12 months from date of receipt.
Predicted Protein Size:	79 kDa
Gene Name:	radial spoke head 4 homolog A
Database Link:	<a href="#">NP_001010892</a> <a href="#">Entrez Gene 345895 Human</a> <a href="#">Q5TD94</a>
Background:	This gene encodes a protein that appears to be a component the radial spoke head, as determined by homology to similar proteins in the biflagellate alga <i>Chlamydomonas reinhardtii</i> and other ciliates. Radial spokes, which are regularly spaced along cilia, sperm, and flagella axonemes, consist of a thin 'stalk' and a bulbous 'head' that form a signal transduction scaffold between the central pair of microtubules and dynein. Mutations in this gene cause primary ciliary dyskinesia 1, a disease arising from dysmotility of motile cilia and sperm. Alternative splicing results in multiple transcript variants.

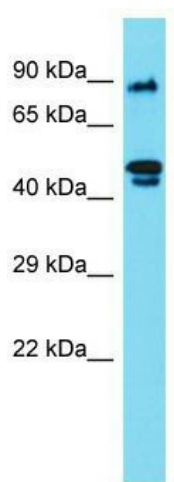


[View online »](#)

Synonyms: CILD11; dj412i7.1; RSHL3; RSPH6B

Note: Immunogen sequence homology: Human: 100%

### Product images:



Host: Rabbit; Target Name: RSPH4A; Sample Tissue: 721\_B Whole Cell lysates; Antibody Dilution: 1.0ug/ml