

## Product datasheet for **TA332268**

### PRAMEF7 Rabbit Polyclonal Antibody

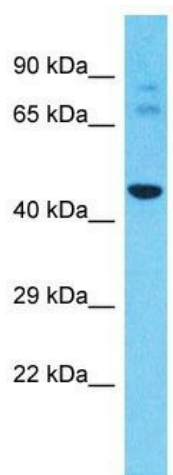
#### Product data:

Product Type:	Primary Antibodies
Applications:	WB
Recommended Dilution:	WB
Reactivity:	Human
Host:	Rabbit
Isotype:	IgG
Clonality:	Polyclonal
Immunogen:	The immunogen for Anti-PRAMEF7 Antibody is: synthetic peptide directed towards the N-terminal region of Human PRAMEF7. Synthetic peptide located within the following region: ATASFPEALSQKQTADNCPGTGRQQPFMVFDLCLKNRTLDECLTHLLEW
Formulation:	Liquid. Purified antibody supplied in 1x PBS buffer with 0.09% (w/v) sodium azide and 2% sucrose.
Conjugation:	Unconjugated
Storage:	Store at -20°C as received.
Stability:	Stable for 12 months from date of receipt.
Predicted Protein Size:	52 kDa
Gene Name:	PRAME family member 7
Database Link:	<a href="#">NP_001012277</a> <a href="#">Entrez Gene 441871 Human</a> <a href="#">Q5VXH5</a>
Background:	The function of this protein remains unknown.
Synonyms:	MGC178110
Note:	Immunogen sequence homology: Human: 100%



[View online »](#)

## Product images:



Host: Rabbit  
Target Name: PRAMEF7  
Sample Tissue: A549 Cell Lysate  
Antibody Dilution: 1.0µg/ml

Host: Rabbit; Target Name: PRAMEF7; Sample  
Tissue: A549 Whole Cell lysates; Antibody  
Dilution: 1.0ug/ml